

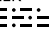
# CRIED NINE DEPARTURE

AL-5433 (FAA)


LA PORTE MUNI (T41)  
LA PORTE, TEXAS

CLINC DEL  
125.6  
CTAF  
122.7  
HOUSTON DEP CON  
134.45 284.0

**TOP ALTITUDE:  
ASSIGNED BY ATC**

CEDAR CREEK  
114.8 CQY   
Chan 95  
N32°11.14'-W96°13.09'  
L-17,H-6

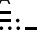
CRIED  
N31°21.24'  
W95°39.68'


LUFKIN  
112.1 LFK   
Chan 58

STELL  
N30°50.41'  
W95°32.65'

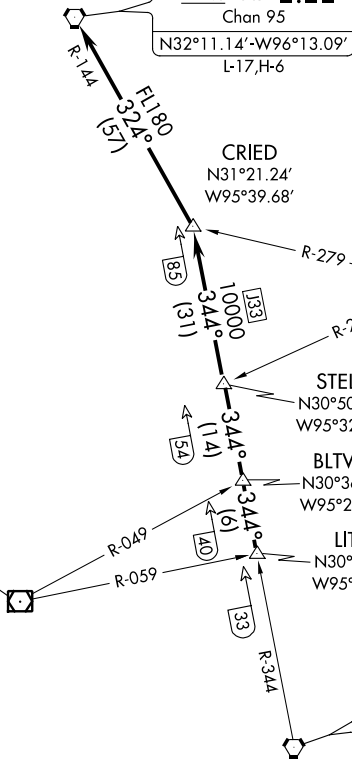
BLTWY  
N30°36.34'  
W95°29.47'

LITLD  
N30°30.29'  
W95°28.10'

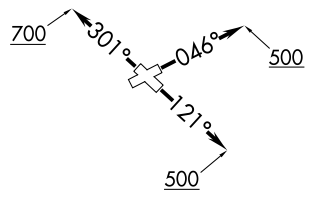
NAVASOTA  
115.9 TNV   
Chan 106

HUMBLE  
116.6 IAH   
Chan 113

NOTE: RADAR required.



TAKEOFF MINIMUMS  
Rwys 5, 12, 23, 30: Standard.



(NARRATIVE ON FOLLOWING PAGE)

NOTE: Chart not to scale.

# CRIED NINE DEPARTURE

SC-5, 12 SEP 2019 to 10 OCT 2019

SC-5, 12 SEP 2019 to 10 OCT 2019