

# EL DORADO NINE DEPARTURE

CLNC DEL  
125.6  
CTAF  
122.7  
HOUSTON DEP CON  
134.45 284.0

**TOP ALTITUDE:  
ASSIGNED BY ATC**

EL DORADO  
115.5 ELD  
Chan 102  
N33°15.37'-W92°44.64'  
L-17, H-6

NOTE: RADAR required.  
NOTE: For aircraft destined MEM  
or filed via Q32 or J42.

LUFKIN  
112.1 LFK  
Chan 58

ENJOY  
N31°16.73'  
W94°19.82'

MUSIQ  
N30°33.17'  
W94°53.53'

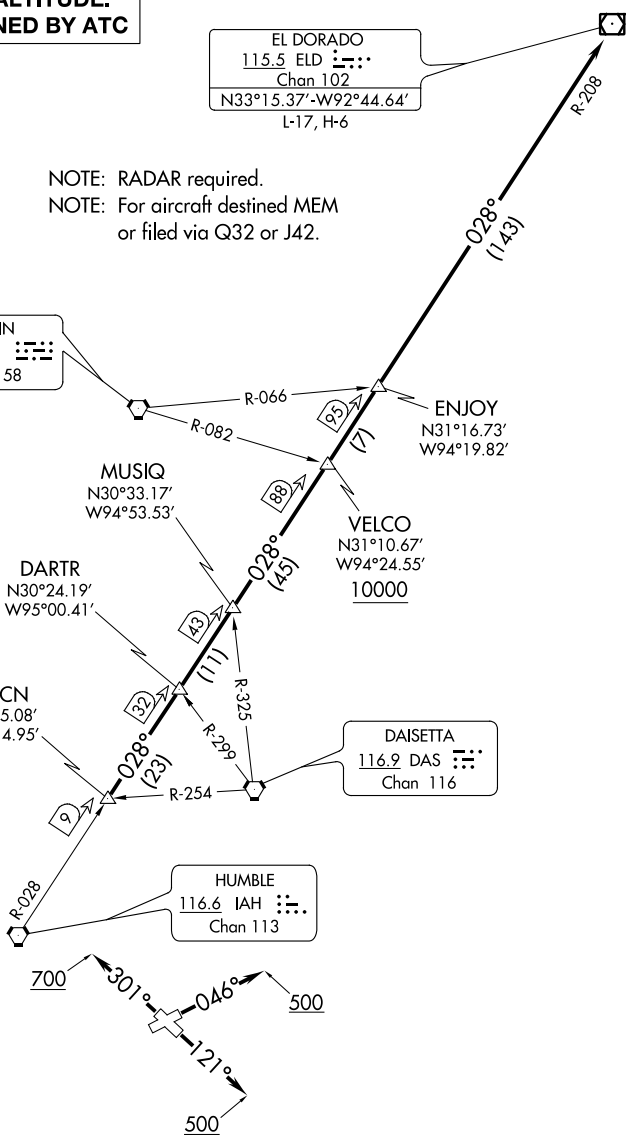
VELCO  
N31°10.67'  
W94°24.55'  
10000

DARTR  
N30°24.19'  
W95°00.41'

RAECN  
N30°05.08'  
W95°14.95'

DAISETTA  
116.9 DAS  
Chan 116

HUMBLE  
116.6 IAH  
Chan 113



TAKEOFF MINIMUMS  
Rwys 5, 12, 23, 30: Standard.

NOTE: Chart not to scale.

(NARRATIVE ON FOLLOWING PAGE)

SC-5, 12 SEP 2019 to 10 OCT 2019

SC-5, 12 SEP 2019 to 10 OCT 2019