

(INDIE7.INDIE) 19115

AL-5433 (FAA)

LA PORTE MUNI (T41)
LA PORTE, TEXAS

INDIE SEVEN DEPARTURE (RNAV)

CLNC DEL
125.6
CTAF
122.7
HOUSTON DEP CON
134.45 284.0

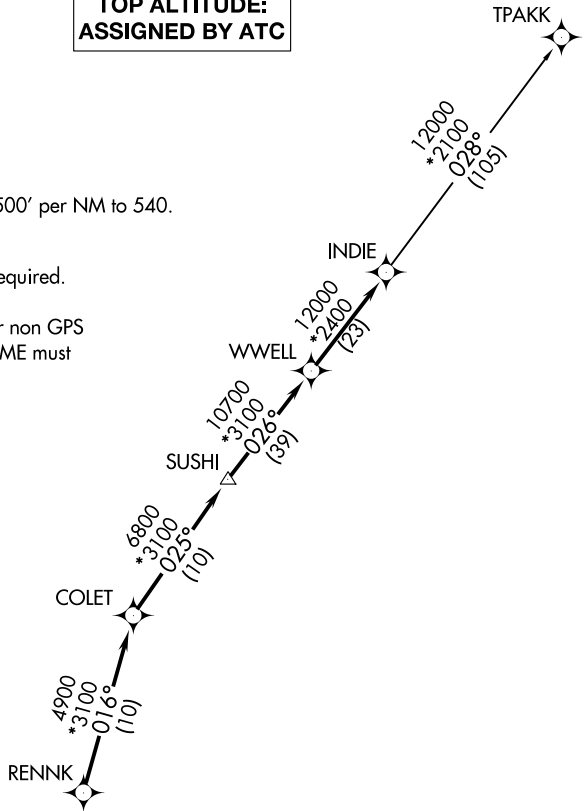
**TOP ALTITUDE:
ASSIGNED BY ATC**

TAKEOFF MINIMUMS

Rwys 5, 12, 23, 30:

Standard with minimum climb of 500' per NM to 540.

- NOTE: RADAR required.
- NOTE: DME/DME/IRU or GPS required.
- NOTE: RNAV 1.
- NOTE: TPAKK TRANSITION: For non GPS equipped aircraft TNV DME must be operational.

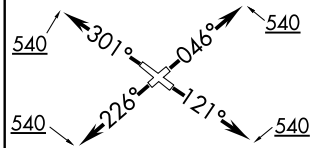


DEPARTURE ROUTE DESCRIPTION

- TAKEOFF RWY 5: Climb heading 046° to 540 for RADAR vectors to RENNK, thence
- TAKEOFF RWY 12: Climb heading 121° to 540 for RADAR vectors to RENNK, thence
- TAKEOFF RWY 23: Climb heading 226° to 540 for RADAR vectors to RENNK, thence
- TAKEOFF RWY 30: Climb heading 301° to 540 for RADAR vectors to RENNK, thence

. . . . on track 016° to COLET, then on track 025° to SUSHI, then on track 026° to WWELL, then on track 026° to INDIE, then on (transition). Maintain ATC assigned altitude. Expect filed altitude 10 minutes after departure.

TPAKK TRANSITION (INDIE7.TPAKK)



NOTE: Chart not to scale.

INDIE SEVEN DEPARTURE (RNAV)

(INDIE7.INDIE) 25APR19

LA PORTE, TEXAS
LA PORTE MUNI (T41)

SC-5, 12 SEP 2019 to 10 OCT 2019

SC-5, 12 SEP 2019 to 10 OCT 2019