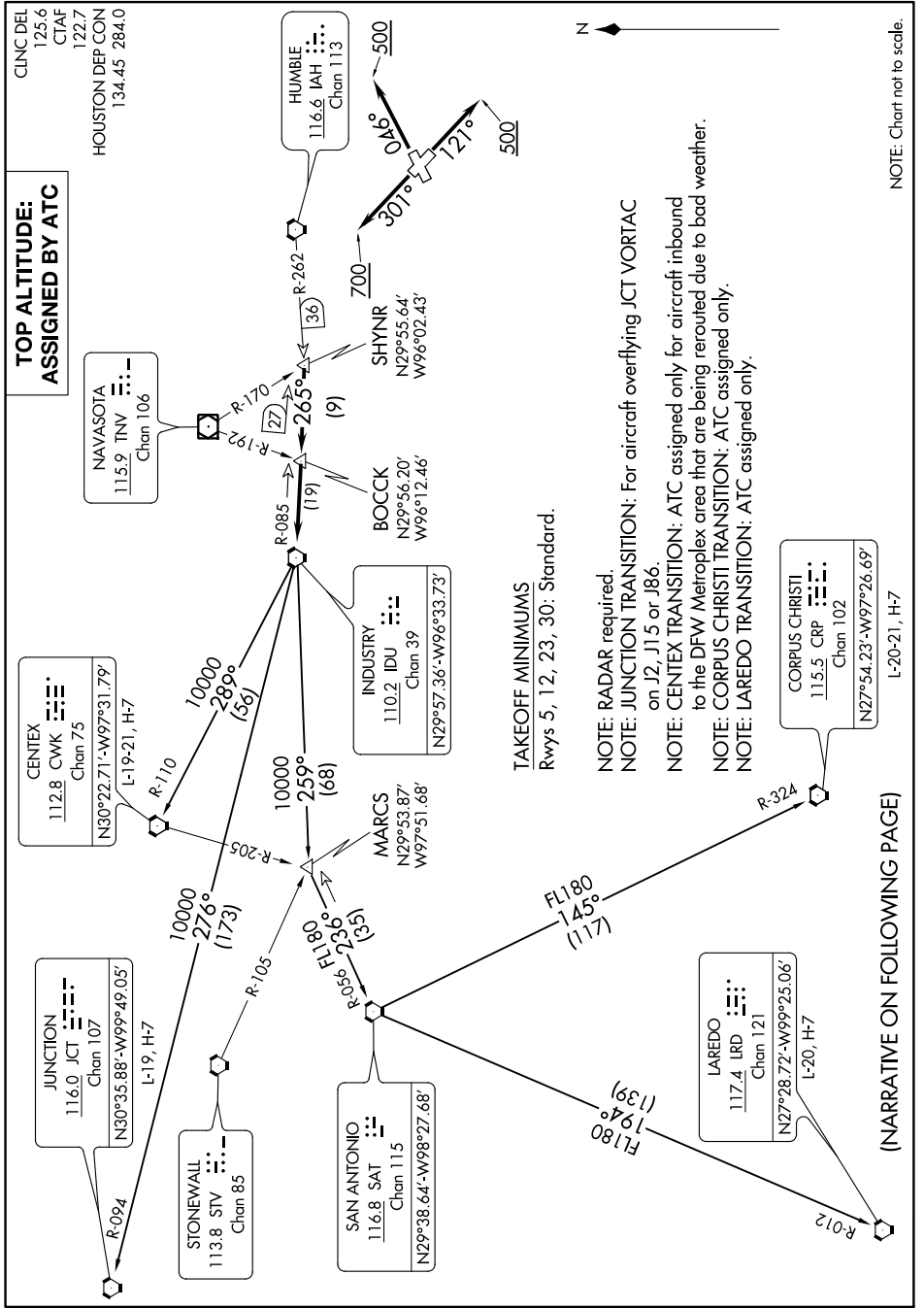


INDUSTRY NINE DEPARTURE

AL-5433 (FAA)

LA PORTE MUNI (T41)
LA PORTE, TEXAS

SC-5, 12 SEP 2019 to 10 OCT 2019



**TOP ALTITUDE:
ASSIGNED BY ATC**

CENTEX
112.8 CWK
Chan 75
N30°22.71'-W97°31.79'
L-19-21, H-7

JUNCTION
116.0 JCT
Chan 107
N30°35.88'-W99°49.05'
L-19, H-7

STONEWALL
113.8 STW
Chan 85

SAN ANTONIO
116.8 SAT
Chan 115
N29°38.64'-W98°27.68'

INDUSTRY
110.2 IDU
Chan 39
N29°57.36'-W96°33.73'

MARCS
N29°53.87'
W97°51.68'

BOCK
N29°56.20'
W96°12.46'

SHYNR
N29°55.64'
W96°02.43'

HUMBIE
116.6 IAH
Chan 113

CORPUS CHRISTI
115.5 CRP
Chan 102
N27°54.23'-W97°26.69'
L-20-21, H-7

LAREDO
117.4 IRL
Chan 121
N27°28.72'-W99°25.06'
L-20, H-7

TAKEOFF MINIMUMS
Rwys 5, 12, 23, 30: Standard.

NOTE: RADAR required.
NOTE: JUNCTION TRANSITION: For aircraft overflying JCT VORTAC on J2, J15 or J86.
NOTE: CENTEX TRANSITION: ATC assigned only for aircraft inbound to the DFW Metroplex area that are being rerouted due to bad weather.
NOTE: CORPUS CHRISTI TRANSITION: ATC assigned only.
NOTE: LAREDO TRANSITION: ATC assigned only.

(NARRATIVE ON FOLLOWING PAGE)

NOTE: Chart not to scale.

INDUSTRY NINE DEPARTURE

LA PORTE, TEXAS
LA PORTE MUNI (T41)

SC-5, 12 SEP 2019 to 10 OCT 2019