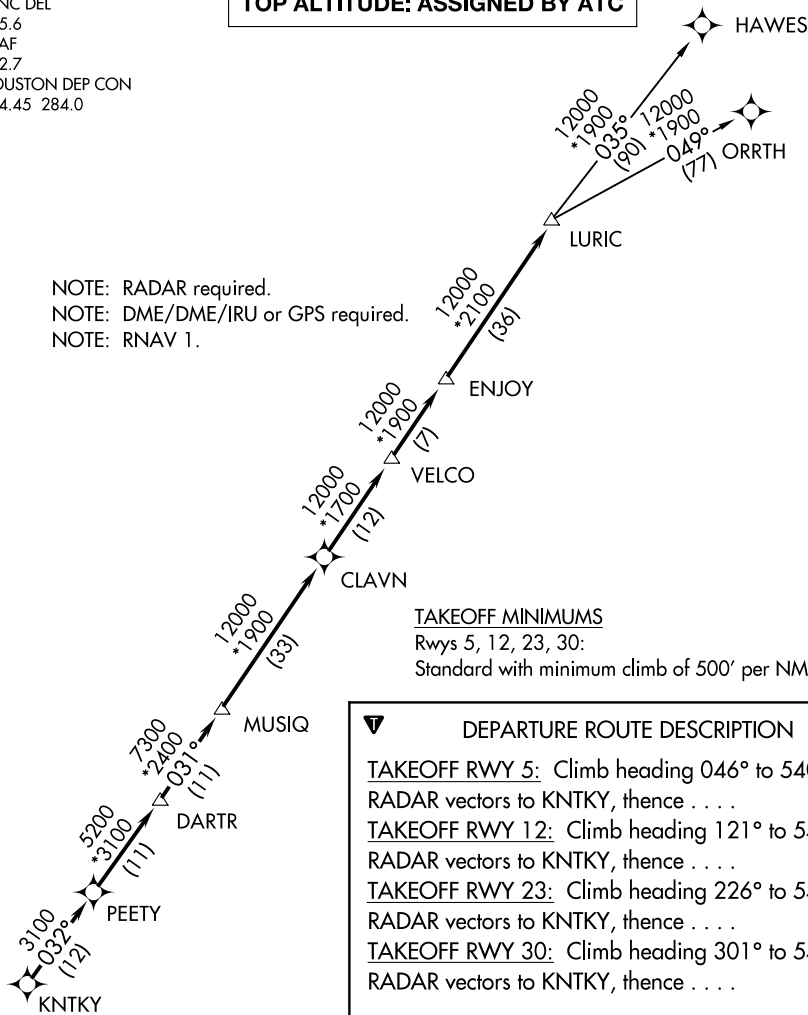


LURIC SEVEN DEPARTURE (RNAV)

CLNC DEL
125.6
CTAF
122.7
HOUSTON DEP CON
134.45 284.0

TOP ALTITUDE: ASSIGNED BY ATC

NOTE: RADAR required.
NOTE: DME/DME/IRU or GPS required.
NOTE: RNAV 1.



TAKEOFF MINIMUMS

Rwys 5, 12, 23, 30:

Standard with minimum climb of 500' per NM to 540.

DEPARTURE ROUTE DESCRIPTION

TAKEOFF RWY 5: Climb heading 046° to 540 for RADAR vectors to KNTKY, thence . . .

TAKEOFF RWY 12: Climb heading 121° to 540 for RADAR vectors to KNTKY, thence . . .

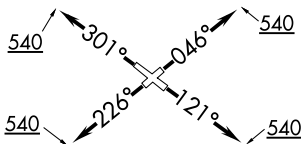
TAKEOFF RWY 23: Climb heading 226° to 540 for RADAR vectors to KNTKY, thence . . .

TAKEOFF RWY 30: Climb heading 301° to 540 for RADAR vectors to KNTKY, thence . . .

. . . on track 032° to PEETY, then on track 032° to DARTR, then on track 031° to MUSIQ, then on track 031° to CLAVN, then on track 031° to VELCO, then on track 031° to ENJOY, then on track 031° to LURIC, then on (transition). Maintain ATC assigned altitude. Expect filed altitude 10 minutes after departure.

HAWES TRANSITION (LURIC7.HAWES)

ORRTH TRANSITION (LURIC7.ORRTH)



NOTE: Chart not to scale.

SC-5, 12 SEP 2019 to 10 OCT 2019

SC-5, 12 SEP 2019 to 10 OCT 2019