

STRYA SEVEN DEPARTURE (RNAV)

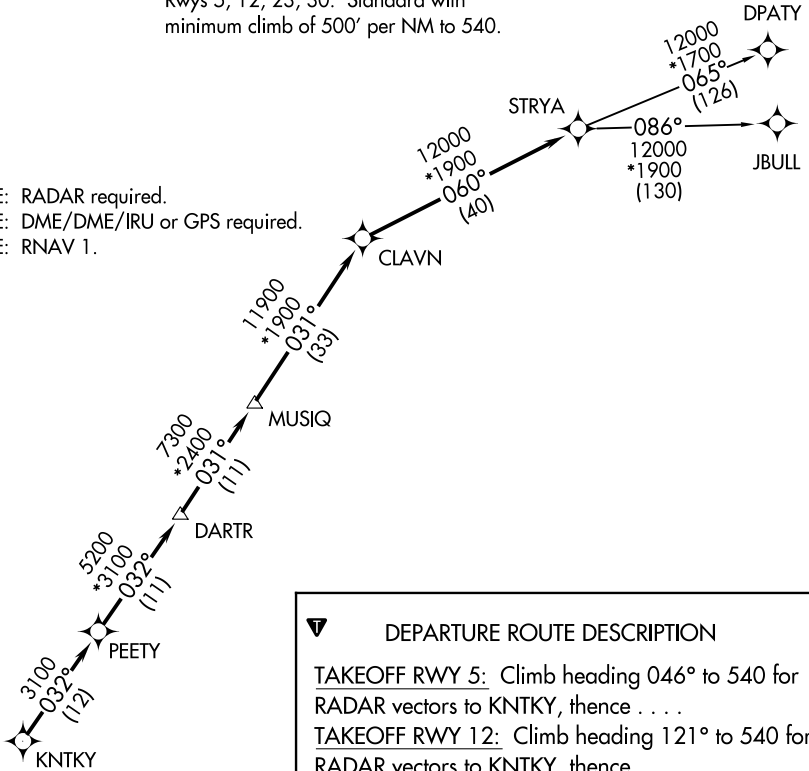
TOP ALTITUDE: ASSIGNED BY ATC

CTAF
122.7
CLNC DEL
125.6
HOUSTON DEP CON
134.45 284.0

TAKEOFF MINIMUMS

Rwys 5, 12, 23, 30: Standard with minimum climb of 500' per NM to 540.

NOTE: RADAR required.
NOTE: DME/DME/IRU or GPS required.
NOTE: RNAV 1.



DEPARTURE ROUTE DESCRIPTION

TAKEOFF RWY 5: Climb heading 046° to 540 for RADAR vectors to KNTKY, thence . . .

TAKEOFF RWY 12: Climb heading 121° to 540 for RADAR vectors to KNTKY, thence . . .

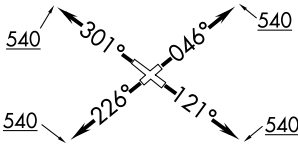
TAKEOFF RWY 23: Climb heading 226° to 540 for RADAR vectors to KNTKY, thence . . .

TAKEOFF RWY 30: Climb heading 301° to 540 for RADAR vectors to KNTKY, thence . . .

. . . on track 032° to PEETY, then on track 032° to DARTR, then on track 031° to MUSIQ, then on track 031° to CLAVN, then on track 060° to STRYA, then on (transition). Maintain ATC assigned altitude. Expect filed altitude 10 minutes after departure.

DPATY TRANSITION (STRYA7.DPATY)

JBULL TRANSITION (STRYA7.JBULL)



NOTE: Chart not to scale.

SC-5, 12 SEP 2019 to 10 OCT 2019

SC-5, 12 SEP 2019 to 10 OCT 2019

STRYA SEVEN DEPARTURE (RNAV)

(STRYA7.STRYA) 25APR19

LA PORTE, TEXAS
LA PORTE MUNI (T41)