

(STYCK7.STYCK) 19115

AL-5433 (FAA)

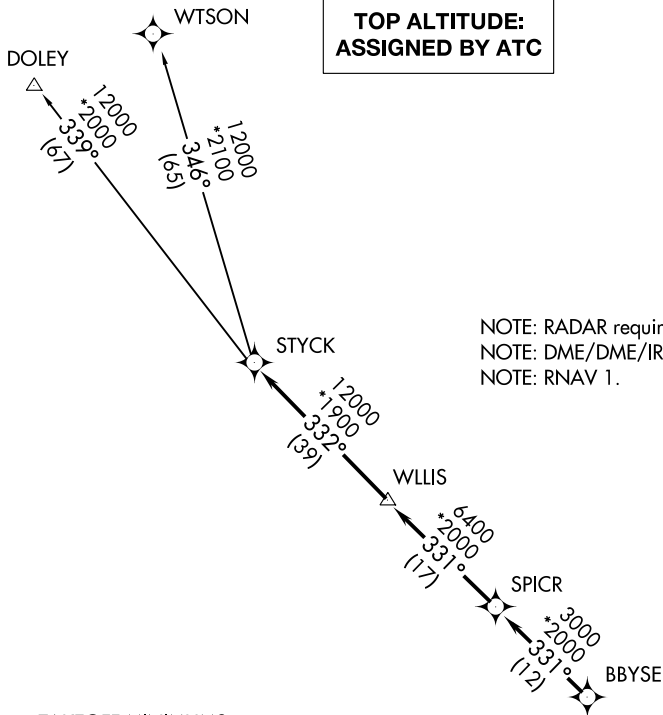
LA PORTE MUNI (T41)

# STYCK SEVEN DEPARTURE (RNAV)

LA PORTE, TEXAS

**TOP ALTITUDE:  
ASSIGNED BY ATC**

CLNC DEL  
125.6  
CTAF  
122.7  
HOUSTON DEP CON  
134.45 284.0

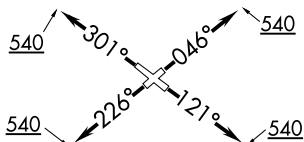


NOTE: RADAR required.  
NOTE: DME/DME/IRU or GPS required.  
NOTE: RNAV 1.

### TAKEOFF MINIMUMS

Rwys 5, 12, 23, 30:

Standard with minimum climb of 500' per NM to 540.



NOTE: Chart not to scale.

### DEPARTURE ROUTE DESCRIPTION

TAKEOFF RWY 5: Climb heading 046° to 540 for RADAR vectors to BBYSE, thence. . . .

TAKEOFF RWY 12: Climb heading 121° to 540 for RADAR vectors to BBYSE, thence. . . .

TAKEOFF RWY 23: Climb heading 226° to 540 for RADAR vectors to BBYSE, thence. . . .

TAKEOFF RWY 30: Climb heading 301° to 540 for RADAR vectors to BBYSE, thence. . . .

. . . .on track 331° to SPICR, then on track 331° to WLLIS, then on track 332° to STYCK, then on (transition). Maintain ATC assigned altitude. Expect filed altitude 10 minutes after departure.

DOLEY TRANSITION (STYCK7.DOLEY)

WTSON TRANSITION (STYCK7.WTSON)

# STYCK SEVEN DEPARTURE (RNAV)

(STYCK7.STYCK) 25APR19

LA PORTE, TEXAS

LA PORTE MUNI (T41)

SC-5, 12 SEP 2019 to 10 OCT 2019

SC-5, 12 SEP 2019 to 10 OCT 2019