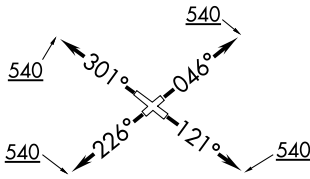


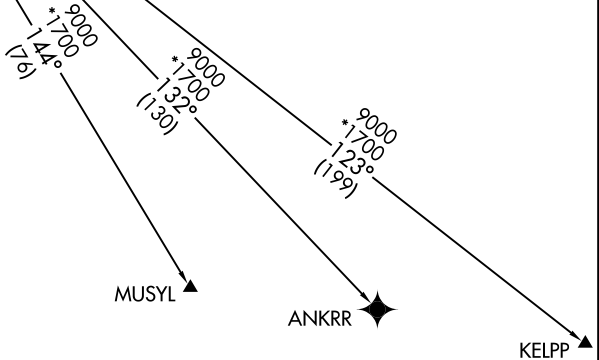
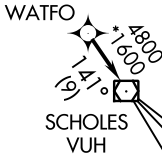
WATFO FIVE DEPARTURE (RNAV)

**TOP ALTITUDE:
ASSIGNED BY ATC**

CTAF
122.7
CLNC DEL
125.6
HOUSTON DEP CON
134.45 284.0



TAKEOFF MINIMUMS:
Rwy 5, 12, 23, 30: Standard with minimum
climb of 500' per NM to 540.



NOTE: GPS required.
NOTE: RADAR required.
NOTE: RNAV 1.

NOTE: Chart not to scale.

DEPARTURE ROUTE DESCRIPTION

TAKEOFF RWY 5: Climb on heading 046° to 540, for RADAR vectors to WATFO, thence. . . .

TAKEOFF RWY 12: Climb on heading 121° to 540, for RADAR vectors to WATFO, thence. . . .

TAKEOFF RWY 23: Climb on heading 226° to 540, for RADAR vectors to WATFO, thence. . . .

TAKEOFF RWY 30: Climb on heading 301° to 540, for RADAR vectors to WATFO, thence. . . .

. . . on track 141° to VUH VOR/DME, then on (transition). Maintain ATC assigned altitude.
Expect filed altitude 10 minutes after departure.

ANKRR TRANSITION (WATFO5.ANKRR)
KELPP TRANSITION (WATFO5.KELPP)
MUSYL TRANSITION (WATFO5.MUSYL)