

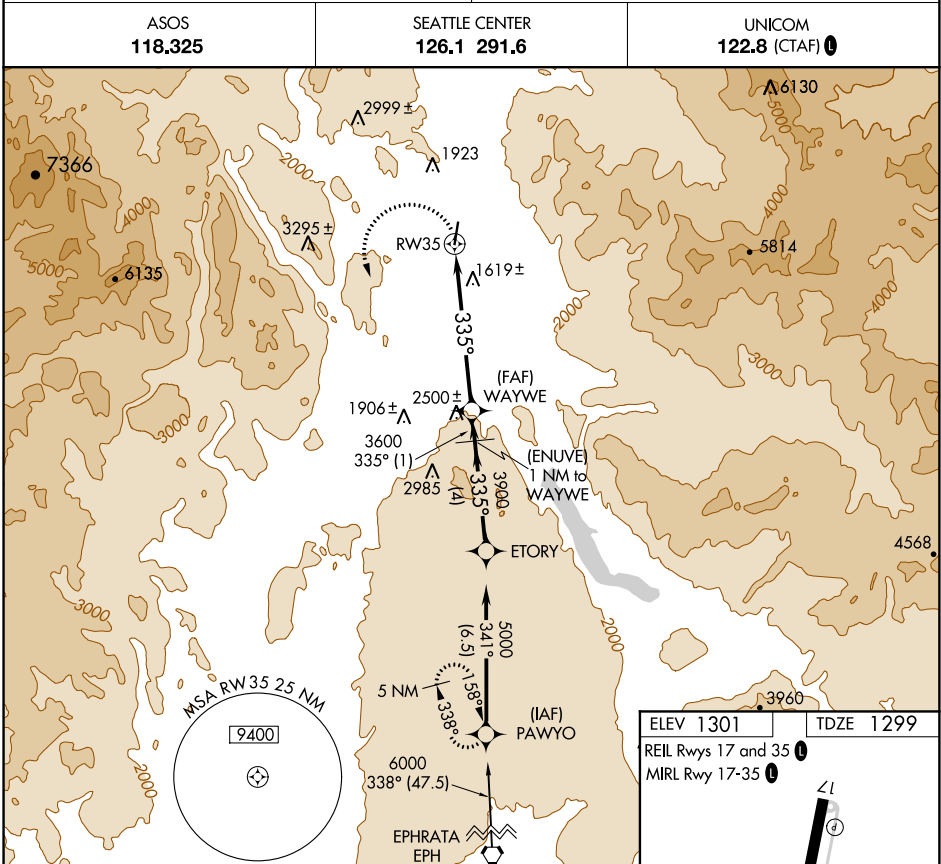
APP CRS 335°	Rwy Idg 4667
	TDZE 1299
	Apt Elev 1301

GPS RWY 35

OMAK (OMK)

MISSED APPROACH: Climbing left turn to 5000 direct PAWYO WP and hold.

 -1.5°C	ASOS 118.325	SEATTLE CENTER 126.1 291.6	UNICOM 122.8 (CTAF)
--------------------	------------------------	--------------------------------------	-------------------------------



NW-1, 12 SEP 2019 to 10 OCT 2019

NW-1, 12 SEP 2019 to 10 OCT 2019

