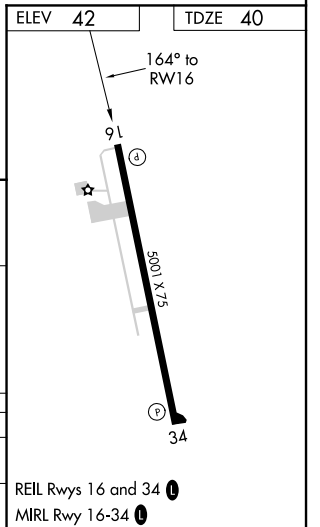
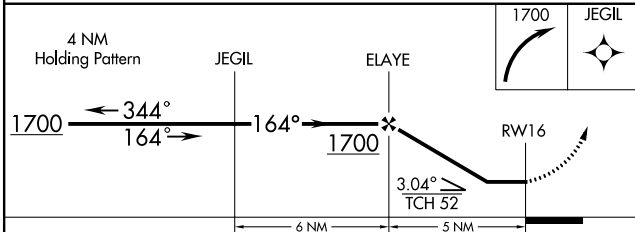
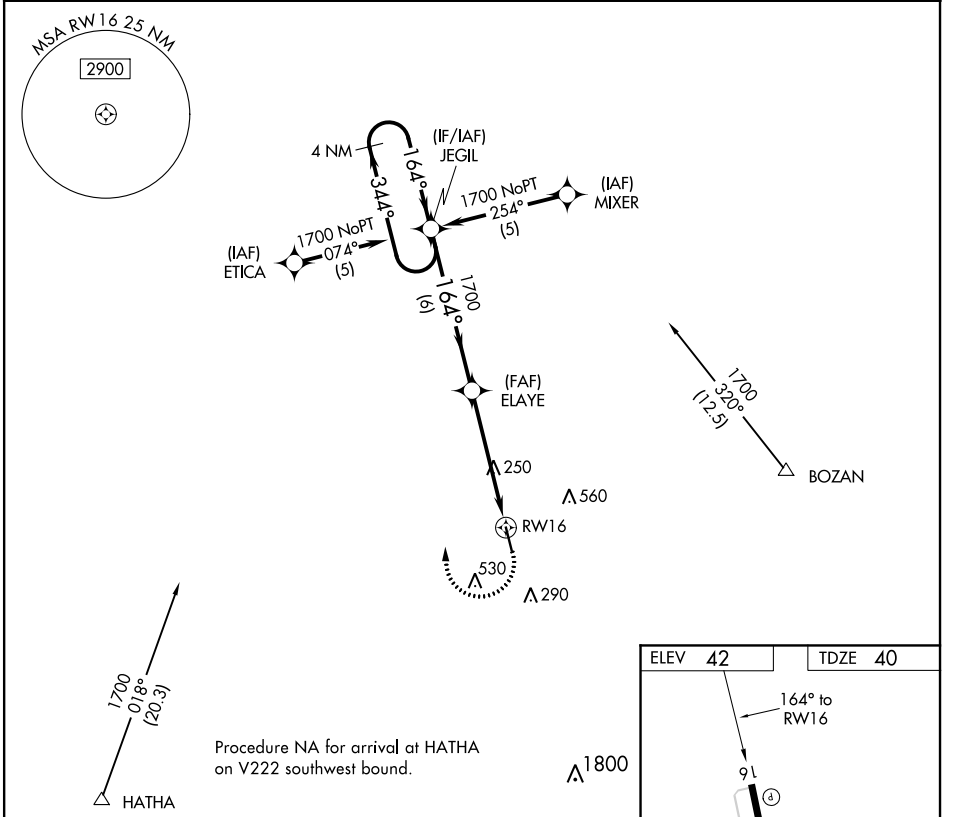


APP CRS 164°	Rwy Idg TDZE Apt Elev	5001 40 42
------------------------	-----------------------------	---------------------------------------

RNAV (GPS) RWY 16

EUNICE (4R7)

RNP APCH.		MISSED APPROACH: Climbing right turn to 1700 direct JEGIL WP and hold.	
▼ Use Lafayette Rgnl/Paul Fournet Field altimeter setting. ▲ NA Procedure NA at night. Rwy 16 helicopter visibility reduction below 1 SM NA.			
LAFAYETTE RGNL/PAUL FOURNET FIELD ASOS 134.05	LAFAYETTE APP CON ★ 128.7 268.7	GCO 135.075	UNICOM 122.8 (CTAF) 0



CATEGORY	A	B	C	D
RNAV MDA	580-1	540 (600-1)	580-1½ 540 (600-1½)	NA
CIRCLING	620-1	578 (600-1)	620-1½ 578 (600-1½)	NA

SC-4, 12 SEP 2019 to 10 OCT 2019

SC-4, 12 SEP 2019 to 10 OCT 2019