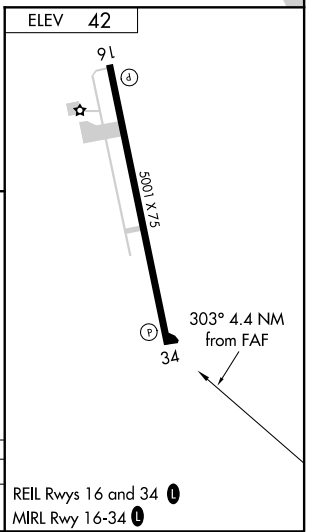
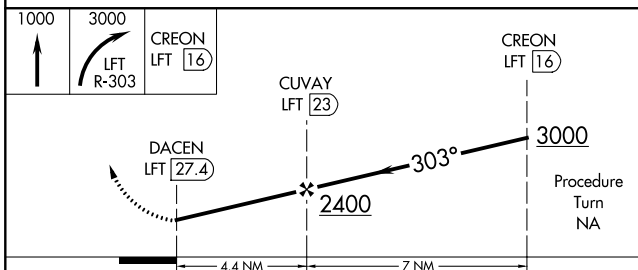
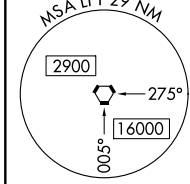
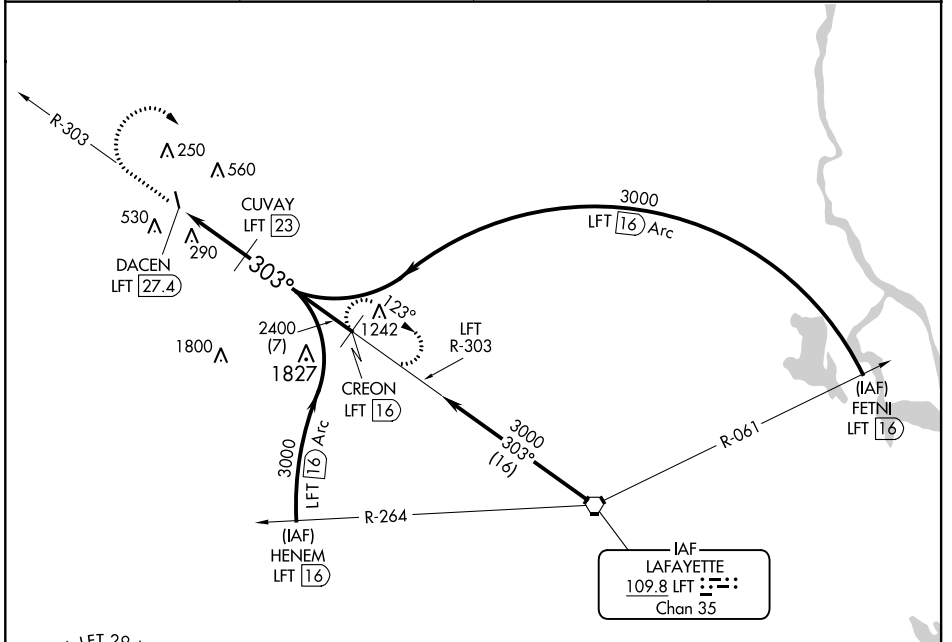


VORTAC LFT <b>109.8</b> Chan 35	APP CRS <b>303°</b>	Rwy Idg TDZE Apt Elev	<b>N/A</b> <b>N/A</b> <b>42</b>
---------------------------------------	------------------------	-----------------------------	---------------------------------------

# VOR/DME-A

EUNICE (4R7)

<p><b>▼</b> Use Lafayette Rgnl/Paul Fournet Field altimeter setting.</p> <p><b>▲ NA</b> Procedure NA at night.</p>	<p>MISSED APPROACH: Climb to 1000 then climbing right turn to 3000 via LFT R-303 to CREON/LFT 16 DME and hold.</p>		
<p>LAFAYETTE RGNL/PAUL FOURNET FIELD ASOS <b>134.05</b></p>	<p>LAFAYETTE APP CON ★ <b>128.7 268.7</b></p>	<p>GCO <b>135.075</b></p>	<p>UNICOM <b>122.8</b> (CTAF) <b>①</b></p>



CATEGORY	A	B	C	D
CIRCLING	900-1¼	858 (900-1¼)	900-2½ 858 (900-2½)	NA

SC-4, 12 SEP 2019 to 10 OCT 2019

SC-4, 12 SEP 2019 to 10 OCT 2019