

(BLTWY6.BLTWY) 19115

AL-5537 (FAA)

BLTWY SIX DEPARTURE (RNAV)

SUGAR LAND RGNL (SGR)
HOUSTON, TEXAS

**TOP ALTITUDE:
ASSIGNED BY ATC**

ATIS
118.125
CLNC DEL
121.4
HOUSTON CLNC DEL
119.25 (when tower closed)
GND CON
121.4
SUGARLAND TOWER*
118.65 (CTAF)
HOUSTON DEP CON
123.8 257.7

NOTE: RADAR required.
NOTE: DME/DME/IRU or GPS required.
NOTE: RNAV 1.

TAKEOFF MINIMUMS

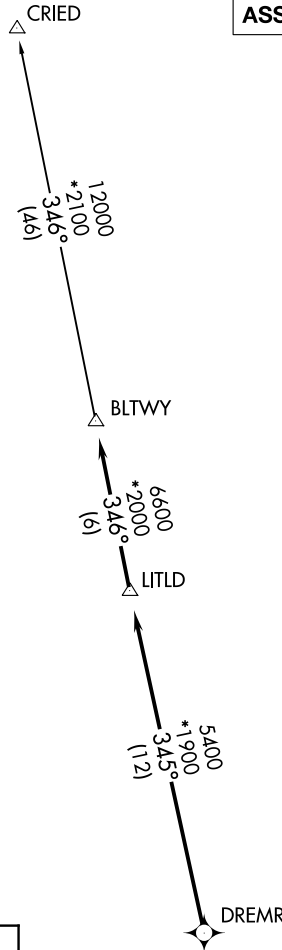
Rwys 17, 35: Standard with minimum climb
of 500' per NM to 600.

DEPARTURE ROUTE DESCRIPTION

TAKEOFF RWY 17: Climb on heading 170° to
1500 for RADAR vectors to DREMR, thence . . .
TAKEOFF RWY 35: Climb on heading 350° to
1100 for RADAR vectors to DREMR, thence . . .

...on track 345° to LITLD, then on track 346° to
BLTWY, then on (transition). Maintain ATC
assigned altitude. Expect filed altitude 10
minutes after departure.

CRIED TRANSITION (BLTWY6.CRIED)



NOTE: Chart not to scale.

BLTWY SIX DEPARTURE (RNAV)

(BLTWY6.BLTWY) 25APR19

HOUSTON, TEXAS
SUGAR LAND RGNL (SGR)

SC-5, 12 SEP 2019 to 10 OCT 2019

SC-5, 12 SEP 2019 to 10 OCT 2019