

# CRIED NINE DEPARTURE

AL-5537 (FAA)

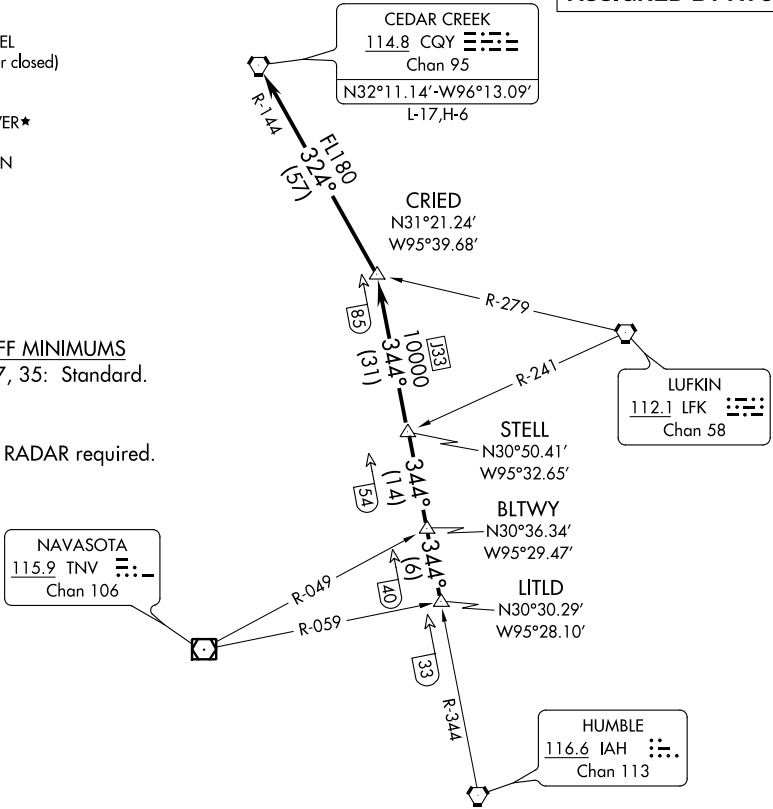
SUGAR LAND RGNL (SGR)  
HOUSTON, TEXAS

ATIS  
118.125  
CLNC DEL  
121.4  
HOUSTON CLNC DEL  
119.25 (when tower closed)  
GND CON  
121.4  
SUGAR LAND TOWER\*  
118.65 (CTAF)  
HOUSTON DEP CON  
123.8 257.7

**TOP ALTITUDE:  
ASSIGNED BY ATC**

TAKEOFF MINIMUMS  
Rwys 17, 35: Standard.

NOTE: RADAR required.



SC-5, 12 SEP 2019 to 10 OCT 2019

SC-5, 12 SEP 2019 to 10 OCT 2019

(NARRATIVE ON FOLLOWING PAGE)

NOTE: Chart not to scale.

# CRIED NINE DEPARTURE