

EL DORADO NINE DEPARTURE

ATIS
 118.125
 CLNC DEL
 121.4
 HOUSTON CLNC DEL
 119.25 (when tower closed)
 GND CON
 121.4
 SUGAR LAND TOWER ★
 118.65
 HOUSTON DEP CON
 123.8 257.7

**TOP ALTITUDE:
 ASSIGNED BY ATC**

EL DORADO
 115.5 ELD
 Chan 102
 N33°15.37'-W92°44.64'
 L-17, H-6

NOTE: RADAR required.
 NOTE: For aircraft destined MEM
 or filed via Q32 or J42.

LUFKIN
 112.1 LFK
 Chan 58

MUSIQ
 N30°33.17'
 W94°53.53'

DARTR
 N30°24.19'
 W95°00.41'

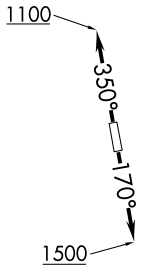
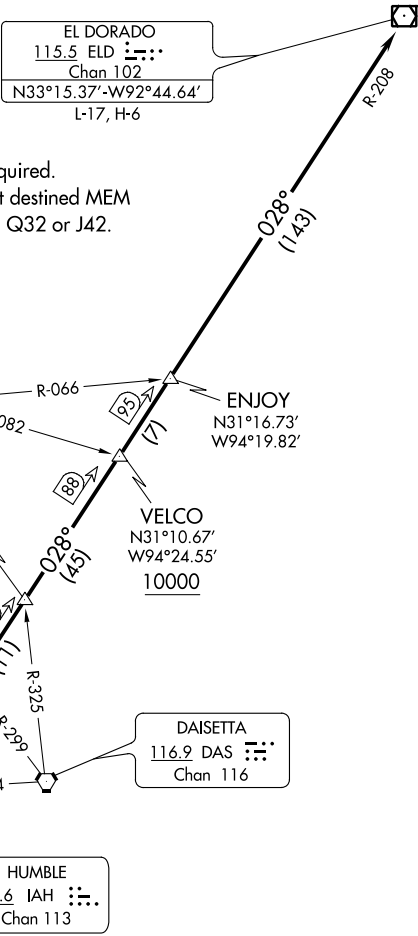
RAECN
 N30°05.08'
 W95°14.95'

HUMBLE
 116.6 IAH
 Chan 113

DAISETTA
 116.9 DAS
 Chan 116

VELCO
 N31°10.67'
 W94°24.55'
 10000

ENJOY
 N31°16.73'
 W94°19.82'



TAKEOFF MINIMUMS
 Rwy 17, 35: Standard.

NOTE: Chart not to scale.

(NARRATIVE ON FOLLOWING PAGE)

SC-5, 12 SEP 2019 to 10 OCT 2019

SC-5, 12 SEP 2019 to 10 OCT 2019