

# HOODO SIX DEPARTURE (RNAV)

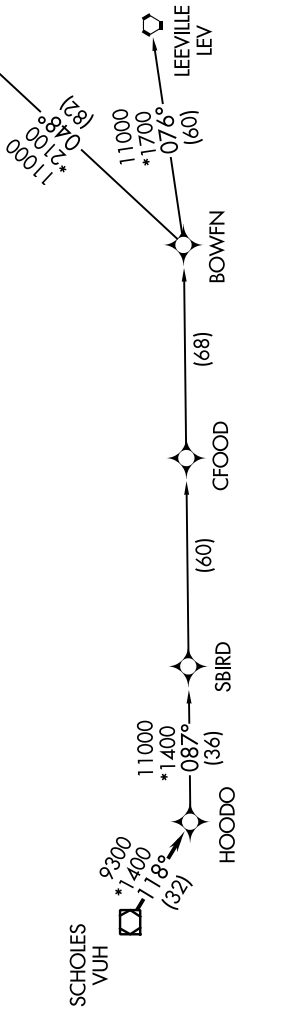
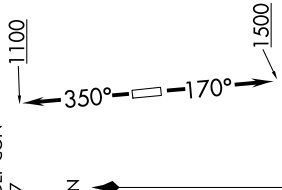
SC-5, 12 SEP 2019 to 10 OCT 2019

### TOP ALTITUDE: ASSIGNED BY ATC

NOTE: RNAV 1.  
NOTE: RADAR required.  
NOTE: ATC assigned only.  
NOTE: DME/DME/IRU or GPS required.  
NOTE: For non-GPS equipped aircraft, LCH, ILA, TBD, and LEV DME's must be operational.

**TAKEOFF MINIMUMS**  
Rwy 17, 35: Standard with a minimum climb of 500' per NM to 600.

ATIS 118.125  
CLNC DEL 121.4  
HOUSTON CLNC DEL 119.25 (when tower closed)  
GND CON 121.4  
SUGARLAND TOWER\* 118.65 (CTAF)  
HOUSTON DEP CON 123.8 257.7



NOTE: Chart not to scale.

### DEPARTURE ROUTE DESCRIPTION

**TAKEOFF RWY 17:** Climb heading 170° to 1500, for RADAR vectors to VUH VOR/DME, thence . . . .  
**TAKEOFF RWY 35:** Climb heading 350° to 1100, for RADAR vectors to VUH VOR/DME, thence . . . .

. . . . on track 118° to HOODO, then on (transition). Maintain ATC assigned altitude.  
Expect filed altitude 10 minutes after departure.

- BOWFN TRANSITION (HOODO6.BOWFN)
- CFOOD TRANSITION (HOODO6.CFOOD)
- HARVEY TRANSITION (HOODO6.HRV)
- LEEVILLE TRANSITION (HOODO6.LEV)
- SBIRD TRANSITION (HOODO6.SBIRD)

SC-5, 12 SEP 2019 to 10 OCT 2019