

LOC/DME I-TXH 110.7	APP CRS 350°	Rwy Idg TDZE Apt Elev	6016 78 82
Chan 44			

ILS or LOC RWY 35

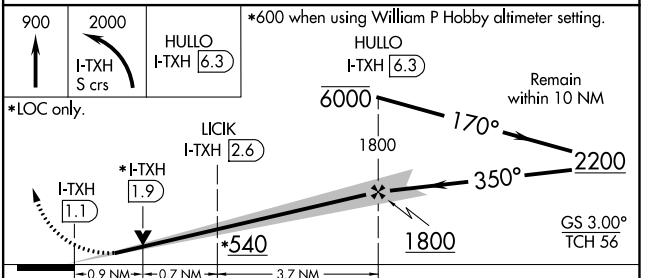
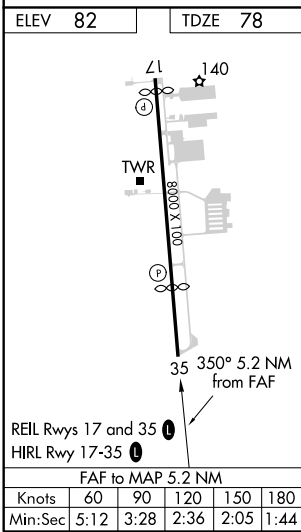
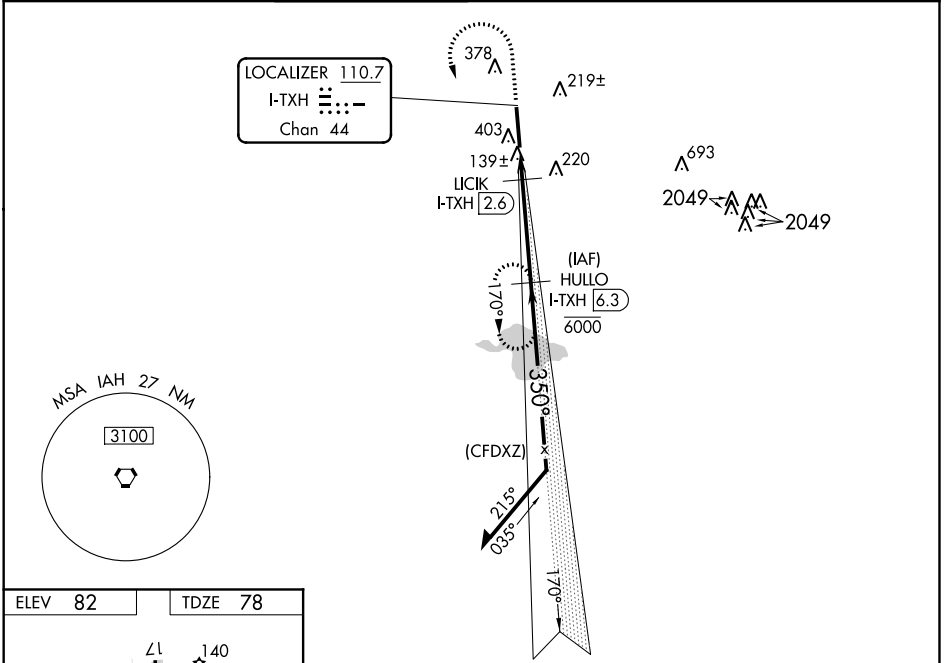
SUGAR LAND RGNL (SGR)

DME required.
RADAR required for procedure entry.

VDP NA when using William P Hobby altimeter setting. When local altimeter setting not received, use William P Hobby altimeter setting and increase all DA 51 feet and all MDA 60 feet and S-LOC 35 Cat C/D visibility 1/8 mile, and Circling Cat C/D visibility 1/4 mile.

MISSED APPROACH: Climb to 900 then climbing left turn to 2000 on I-TXH localizer south course to HULLO/I-TXH 6.3 DME and hold.

ATIS 118.125	HOUSTON APP CON 123.8 257.7	SUGAR LAND TOWER * 118.65 (CTAF) 0	GND CON 121.4	CLNC DEL 121.4	HOUSTON CLNC DEL 119.25 (When tower closed)	UNICOM 122.95
------------------------	---------------------------------------	---	-------------------------	--------------------------	--	-------------------------



CATEGORY	A	B	C	D
S-ILS 35	278-3/4		200 (200-3/4)	
S-LOC 35	400-1		322 (400-1)	
CIRCLING	720-1 638 (700-1)		720-1 3/4 638 (700-1 3/4)	720-2 638 (700-2)

SC-5, 12 SEP 2019 to 10 OCT 2019

SC-5, 12 SEP 2019 to 10 OCT 2019