

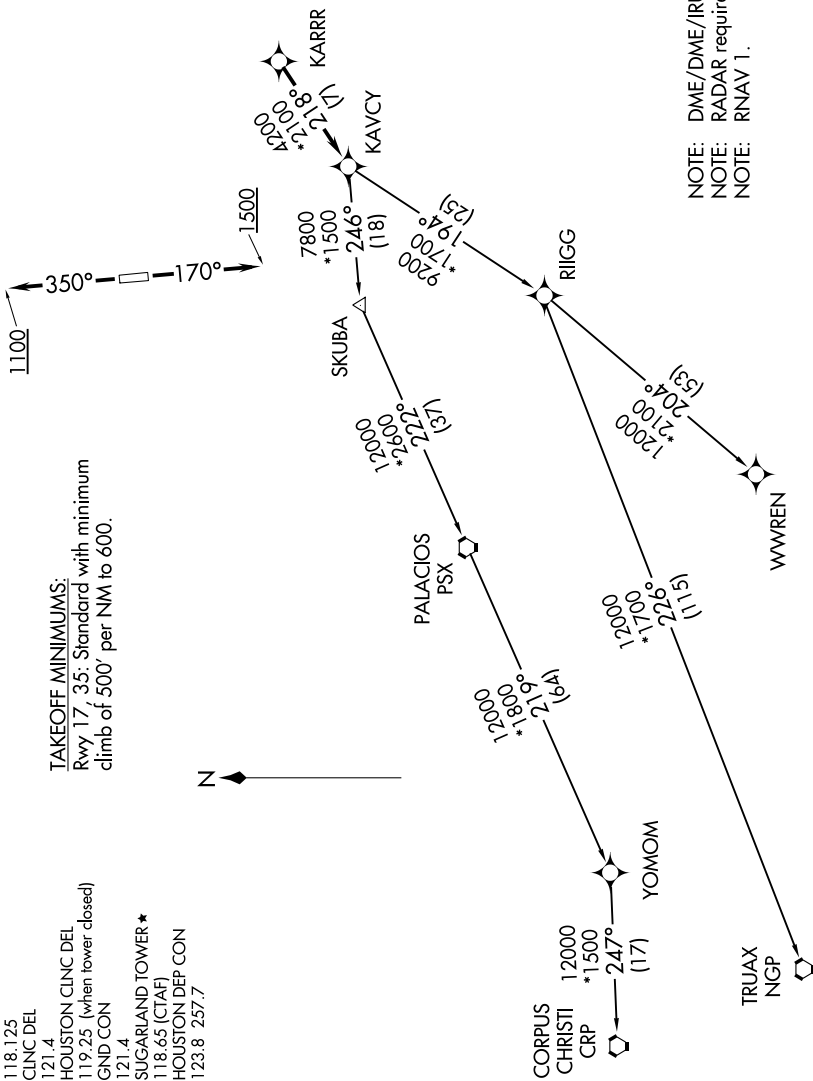
KARRR FIVE DEPARTURE (RNAV)

**TOP ALTITUDE:
ASSIGNED BY ATC**

TAKEOFF MINIMUMS:

Rwy 17, 35: Standard with minimum
climb of 500' per NM to 600.

- ATIS 118.125
- CINC DEL 121.4
- HOUSTON CINC DEL 119.25 (when tower closed)
- GND CON 121.4
- SUGARLAND TOWER * 118.65 (CTAF)
- HOUSTON DEP CON 123.8 257.7



(NARRATIVE ON FOLLOWING PAGE)

NOTE: Chart not to scale.

KARRR FIVE DEPARTURE (RNAV)

(KARRR5.KARRR) 25APR19