

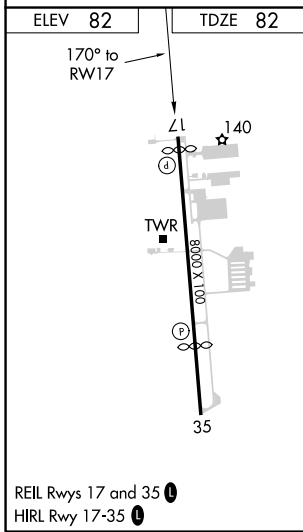
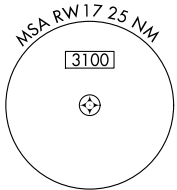
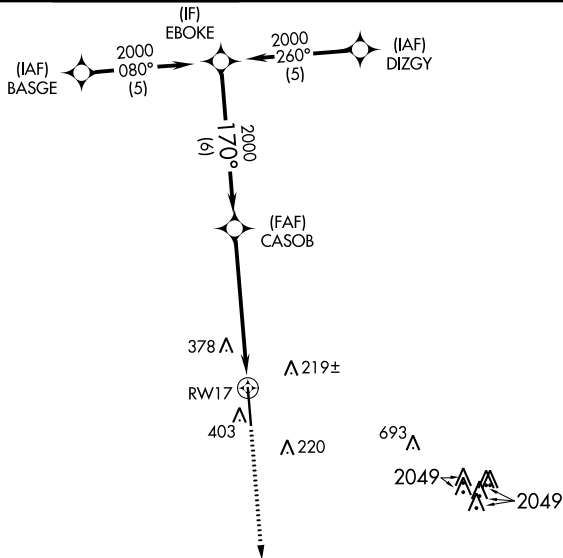
WAAS CH <b>82513</b> <b>W17A</b>	APP CRS <b>170°</b>	Rwy Idg TDZE Apt Elev	<b>7620</b> <b>82</b> <b>82</b>
--	------------------------	-----------------------------	---------------------------------------

# RNAV (GPS) RWY 17

SUGAR LAND RGNL (SGR)

RNP APCH.	MISSED APPROACH: Climb to 2000 direct POPAM and hold.
<p><b>▼</b> Rwy 17 helicopter visibility reduction below 3/4 SM NA. For uncompensated Baro-VNAV systems, LNAV/VNAV NA below -15°C or above 54°C.</p>	

ATIS <b>118.125</b>	HOUSTON APP CON <b>123.8 257.7</b>	SUGAR LAND TOWER* <b>118.65</b> (CTAF) <b>0</b>	GND CON <b>121.4</b>	CLNC DEL <b>121.4</b>	HOUSTON CLNC DEL <b>119.25</b> (When tower closed)	UNICOM <b>122.95</b>
------------------------	---------------------------------------	--	-------------------------	--------------------------	--	-------------------------



VGSi and RNAV glidepath not coincident (VGSi Angle 3.5/TCH 52).				2000	POPAM
EBOKE	CASOB	RWY 17		* LNAV only.	
2000	2000	* 1.4 NM to RWY 17			
GP 3.00° TCH 52	6 NM	4.4 NM	1.4		
CATEGORY	A	B	C	D	
LPV DA		398-1	316 (400-1)		
LNAV/VNAV DA		704-2	622 (700-2)		
LNAV MDA	640-1	558 (600-1)	640-1 5/8	558 (600-1 5/8)	
CIRCLING	720-1	638 (700-1)	720-1 3/4 638 (700-1 3/4)	720-2 638 (700-2)	

HOUSTON, TEXAS  
Amdt 2A 15AUG19

29°37'N-95°39'W

# SUGAR LAND RGNL (SGR)

## RNAV (GPS) RWY 17

SC-5, 12 SEP 2019 to 10 OCT 2019

SC-5, 12 SEP 2019 to 10 OCT 2019