

WAAS CH <b>56219</b> <b>W35A</b>	APP CRS <b>350°</b>	Rwy Idg TDZE <b>78</b> Apt Elev <b>82</b>	<b>6016</b>
--	------------------------	---	-------------

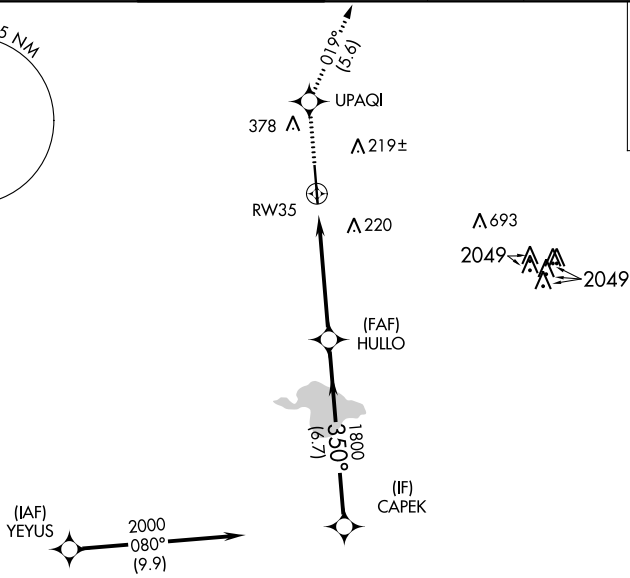
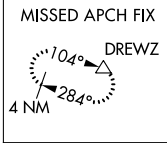
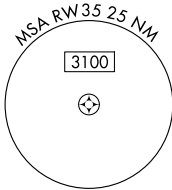
# RNAV (GPS) RWY 35

SUGAR LAND RGNL (SGR)

**⚠** For uncompensated Baro-VNAV systems, LNAV/VNAV NA below -15°C (5°F) or above 43°C (109°F).  
**⚠** DME/DME RNP-0.3 NA. Baro-VNAV and VDP NA when using William P Hobby altimeter setting.  
 When local altimeter setting not received, use William P Hobby altimeter setting: increase all DA 51 feet;  
 increase all MDA 60 feet and increase LNAV-VNAV all Cats visibility to 1¾, LNAV Cat C/D visibility to 1½,  
 and Circling Cat C visibility to 2, Cat D to 2¼. When VGSI inop, Circling Rwy 17 NA at night.

**MISSED APPROACH:**  
 Climb to 2000 direct  
 UPAQI and on track  
 019° to DREWZ and  
 hold.

ATIS <b>118.125</b>	HOUSTON APP CON <b>123.8 257.7</b>	SUGAR LAND TOWER* <b>118.65</b> (CTAF) <b>0</b>	GND CON <b>121.4</b>	CLNC DEL <b>121.4</b>	HOUSTON CLNC DEL <b>119.25</b> (When tower closed)	UNICOM <b>122.95</b>
------------------------	---------------------------------------	--	-------------------------	--------------------------	--	-------------------------

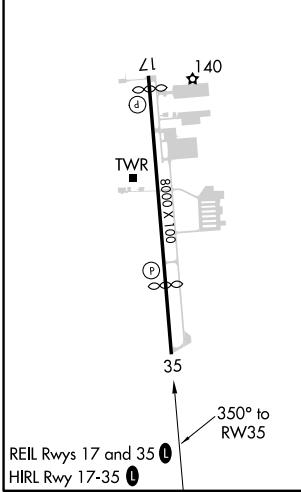


SC-5, 12 SEP 2019 to 10 OCT 2019

SC-5, 12 SEP 2019 to 10 OCT 2019

ELEV 82	TDZE 78
---------	---------

## RADAR REQUIRED



2000	UPAQI	DREWZ	CAPEK	
↑	⊛	tr 019°	△	
* LNAV only.				
* 1.7 NM to RW35				
RW35		HULLO 1800	CAPEK 2000	
1.7		3.5 NM	6.7 NM	
350°		1800	2000	
GP 3.00° TCH 56				
CATEGORY	A	B	C	D
LPV DA	278-¾		200 (200-¾)	
LNAV/VNAV DA	567-1½		489 (500-1½)	
LNAV MDA	660-1	582 (600-1)	660-1¾	582 (600-1¾)
CIRCLING	720-1	638 (700-1)	720-1¾ 638 (700-1¾)	720-2 638 (700-2)