

STRYA SEVEN DEPARTURE (RNAV)

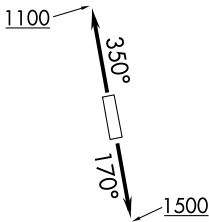
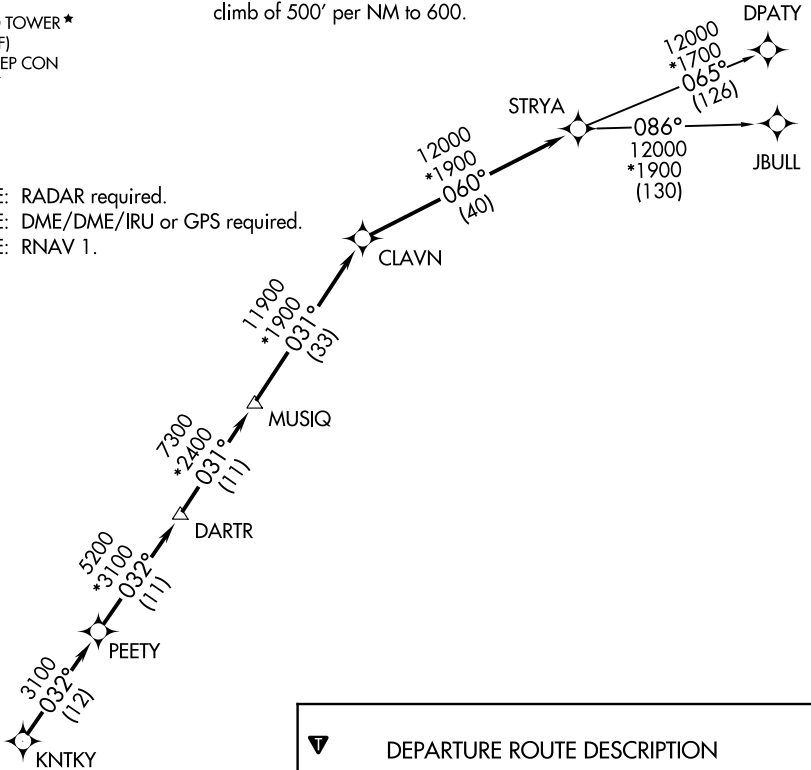
TOP ALTITUDE: ASSIGNED BY ATC

ATIS
118.125
CLNC DEL
121.4
HOUSTON CLNC DEL
119.25 (when tower closed)
GND CON
121.4
SUGARLAND TOWER *
118.65 (CTAF)
HOUSTON DEP CON
123.8 257.7

TAKEOFF MINIMUMS

Rwys 17, 35: Standard with minimum
climb of 500' per NM to 600.

NOTE: RADAR required.
NOTE: DME/DME/IRU or GPS required.
NOTE: RNAV 1.



NOTE: Chart not to scale.



DEPARTURE ROUTE DESCRIPTION

TAKEOFF RWY 17: Climb heading 170° to 1500 for RADAR vectors to KNTKY, thence

TAKEOFF RWY 35: Climb heading 350° to 1100 for RADAR vectors to KNTKY, thence

. . . . on track 032° to PEETY, then on track 032° to DARTR, then on track 031° to MUSIQ, then on track 031° to CLAVN, then on track 060° to STRYA, then on (transition). Maintain ATC assigned altitude. Expect filed altitude 10 minutes after departure.

DPATY TRANSITION (STRYA7.DPATY)

JBULL TRANSITION (STRYA7.JBULL)

STRYA SEVEN DEPARTURE (RNAV)

(STRYA7.STRYA) 25APR19

HOUSTON, TEXAS
SUGAR LAND RGNL (SGR)