

(STYCK7.STYCK) 19115

AL-5537 (FAA)

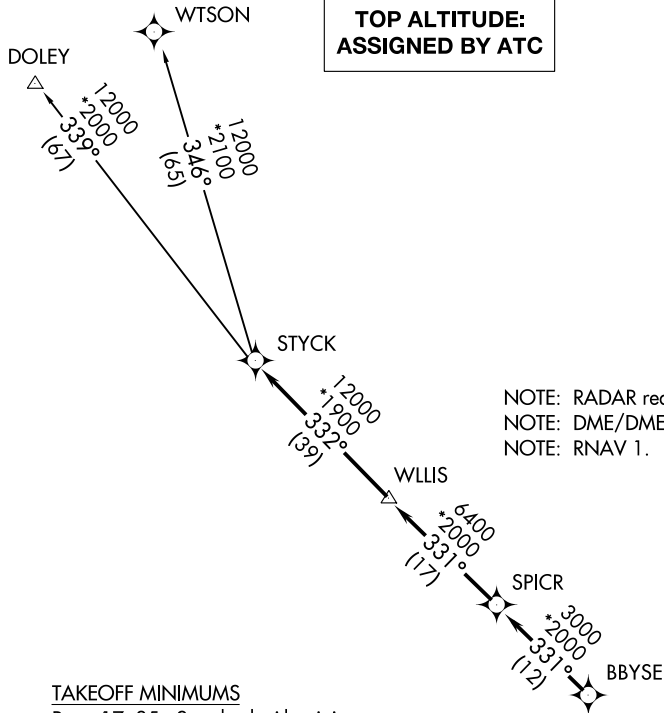
# STYCK SEVEN DEPARTURE (RNAV)

SUGAR LAND RGNL (SGR)

HOUSTON, TEXAS

**TOP ALTITUDE:  
ASSIGNED BY ATC**

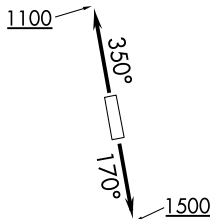
- ATIS 118.125
- CLNC DEL 121.4
- HOUSTON CLNC DEL 119.25 (when tower closed)
- GND CON 121.4
- SUGARLAND TOWER ★ 118.65 (CTAF)
- HOUSTON DEP CON 123.8 257.7



- NOTE: RADAR required.
- NOTE: DME/DME/IRU or GPS required.
- NOTE: RNAV 1.

### TAKEOFF MINIMUMS

Rwys 17, 35: Standard with minimum climb of 500' per NM to 600.



NOTE: Chart not to scale.

### DEPARTURE ROUTE DESCRIPTION

TAKEOFF RWY 17: Climb heading 170° to 1500 for RADAR vectors to BBYSE, thence. . .

TAKEOFF RWY 35: Climb heading 350° to 1100 for RADAR vectors to BBYSE, thence. . .

. . . on track 331° to SPICR, then on track 331° to WLLIS, then on track 332° to STYCK, then on (transition). Maintain ATC assigned altitude. Expect filed altitude 10 minutes after departure.

DOLEY TRANSITION (STYCK7.DOLEY)

WTSON TRANSITION (STYCK7.WTSON)

# STYCK SEVEN DEPARTURE (RNAV)

(STYCK7.STYCK) 25APR19

HOUSTON, TEXAS

SUGAR LAND RGNL (SGR)

SC-5, 12 SEP 2019 to 10 OCT 2019

SC-5, 12 SEP 2019 to 10 OCT 2019