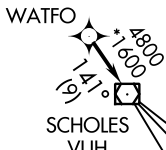
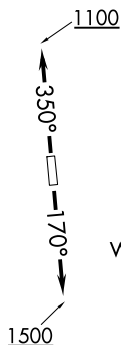


WATFO FIVE DEPARTURE (RNAV)

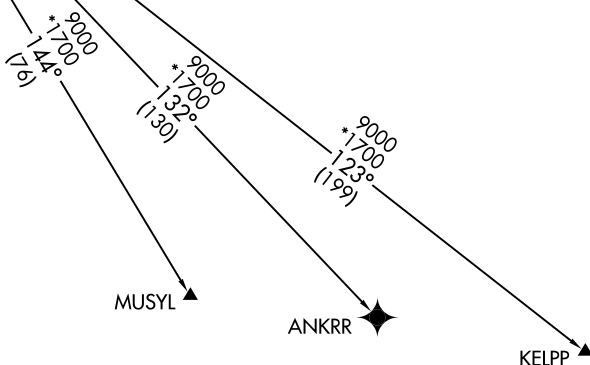
**TOP ALTITUDE:
ASSIGNED BY ATC**

ATIS 118.125
 CLNC DEL 121.4
 HOUSTON CLNC DEL 119.25 (when tower closed)
 GND CON 121.4
 SUGARLAND TOWER* 118.65 (CTAF)
 HOUSTON DEP CON 123.8 257.7



TAKEOFF MINIMUMS:
Rwy 17, 35: Standard with minimum climb of 500' per NM to 600.

NOTE: GPS required.
 NOTE: RADAR required.
 NOTE: RNAV 1.



NOTE: Chart not to scale.

DEPARTURE ROUTE DESCRIPTION

TAKEOFF RWY 17: Climb on heading 170° to 1500, for RADAR vectors to WATFO, thence. . . .

TAKEOFF RWY 35: Climb on heading 350° to 1100, for RADAR vectors to WATFO, thence. . . .

. . . .on track 141° to VUH VOR/DME, then on (transition). Maintain ATC assigned altitude. Expect filed altitude 10 minutes after departure.

ANKRR TRANSITION (WATFO5.ANKRR)

KELPP TRANSITION (WATFO5.KELPP)

MUSYL TRANSITION (WATFO5.MUSYL)