

WAAS CH <b>78023</b> <b>W16A</b>	APP CRS <b>157°</b>	Rwy Idg TDZE <b>16</b> Apt Elev <b>16</b>	<b>5000</b>
--	------------------------	---	-------------

# RNAV (GPS) RWY 16

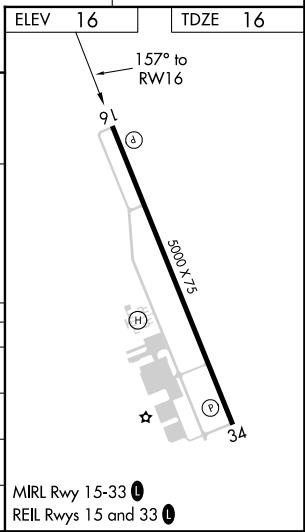
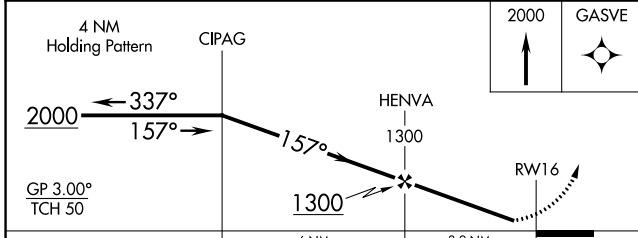
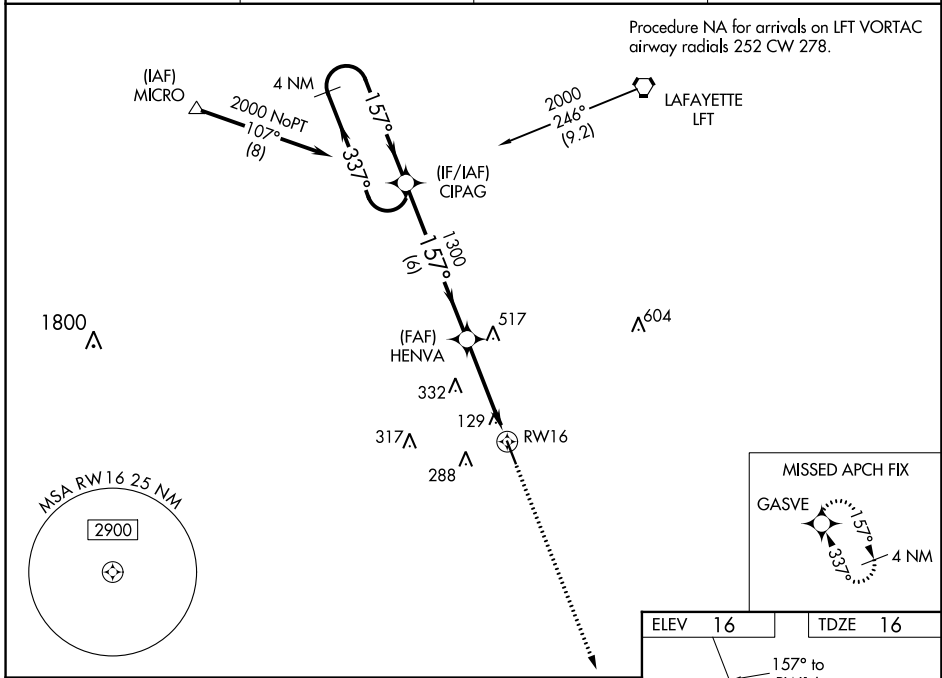
ABBEVILLE CHRIS CRUSTA MEMORIAL (IYA)

**⚠** Baro-VNAV NA when using New Iberia altimeter setting. For uncompensated Baro-VNAV systems, LNAV/VNAV NA below -1.5°C (5°F) or above 54°C (130°F). DME/DME RNP-0.3 NA.  
**⚠** Helicopter visibility reduction below 3/4 SM NA. When local altimeter setting not received, use New Iberia altimeter setting and increase all DA 27 feet and all MDA 40 feet; increase LNAV Cat C visibility 1/8 mile.

**MISSED APPROACH:**  
Climb to 2000 direct GASVE and hold.

AWOS-3 <b>118.875</b>	LAFAYETTE APP CON ★ <b>121.1 268.7</b>	GCO <b>135.075</b>	UNICOM <b>122.8 (CTAF)</b>
--------------------------	---	-----------------------	-------------------------------

Procedure NA for arrivals on LFT VORTAC airway radials 252 CW 278.



CATEGORY	A	B	C	D
LPV DA	266-1	250 (300-1)		NA
LNAV/VNAV DA	279-1	263 (300-1)		NA
LNAV MDA	380-1	364 (400-1)		NA
CIRCLING	440-1 424 (500-1)	540-1 524 (600-1)	620-1 3/4 604 (700-1 3/4)	NA