

WHAEL THREE ARRIVAL

HOUSTON, TEXAS

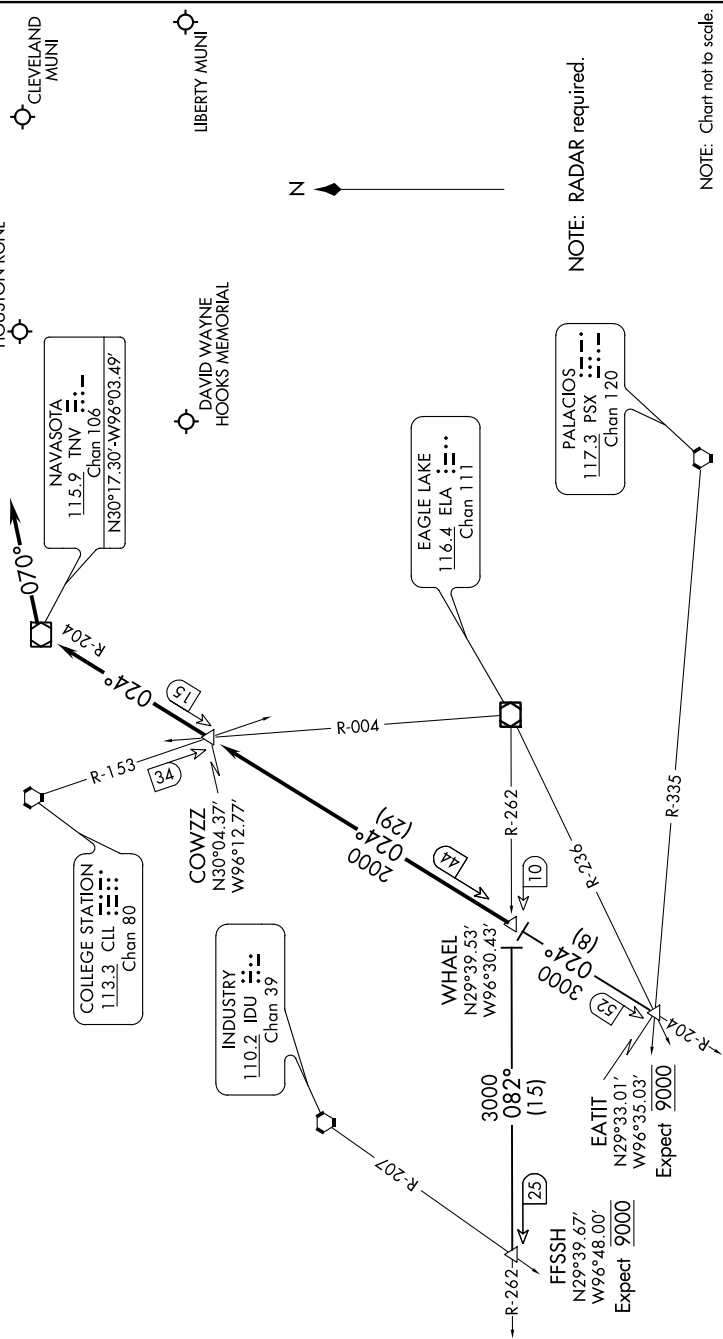
SC-5, 12 SEP 2019 to 10 OCT 2019

ARRIVAL DESCRIPTION

FFSSH TRANSITION (FFSSH, WHAEL3): From over FFSSH INT on ELA R-262 to WHAEL INT. Thence,

EATIT TRANSITION (EATIT, WHAEL3): From over EATIT INT on TNV R-204 to WHAEL INT. Thence,

from over WHAEL INT on TNV R-204 to COWZZ INT, then on TNV R-204 to TNV VOR/DME. Depart TNV VOR/DME heading 070° for vectors to final approach course.



NOTE: RADAR required.

NOTE: Chart not to scale.

WHAEL THREE ARRIVAL

HOUSTON, TEXAS

SC-5, 12 SEP 2019 to 10 OCT 2019