

APP CRS <b>127°</b>	Rwy Idg <b>4494</b>
	TDZE <b>882</b>
	Apt Elev <b>887</b>

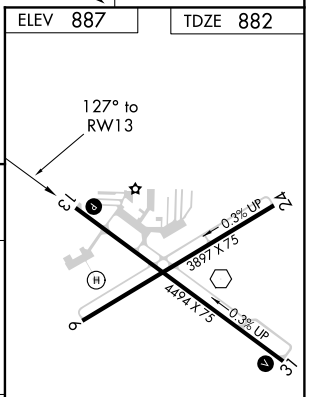
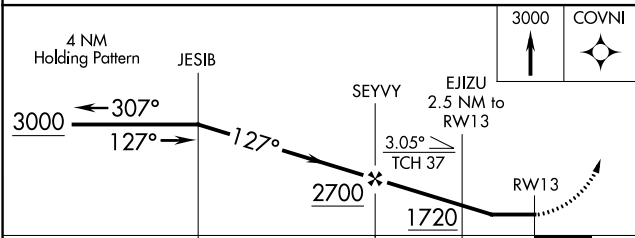
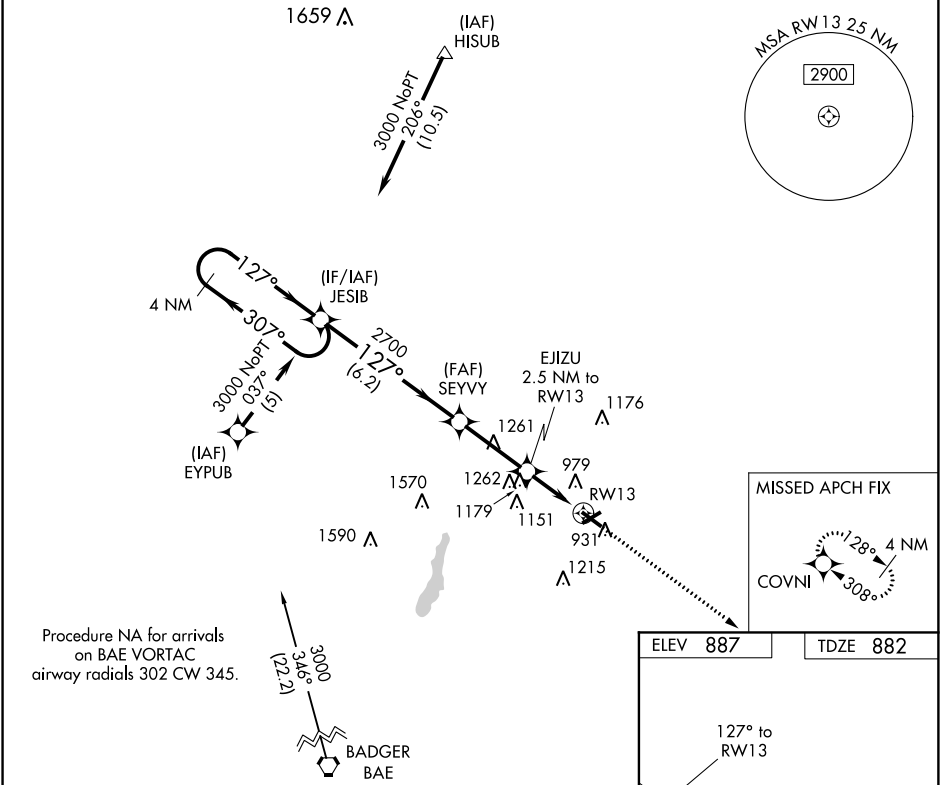
# RNAV (GPS) RWY 13

WEST BEND MUNI (ETB)

**⚠** DME/DME RNP-0.3 NA. When local altimeter setting not received, use Milwaukee/Lawrence J. Timmerman altimeter setting and increase all MDA 80 feet, and increase LNAV Cats C/D and Circling Cat C visibility ½ mile, and Circling Cat D visibility ¼ mile. Night landing: Rwy 6 NA. Helicopter visibility reduction below ¾ SM NA.

**⚠** MISSED APPROACH: Climb to 3000 direct COVNI and hold.

AWOS-3 <b>120.0</b>	MILWAUKEE APP CON <b>125.35 307.0</b>	CLNC DEL <b>124.75</b>	UNICOM <b>122.8 (CTAF) 0</b>
------------------------	------------------------------------------	---------------------------	---------------------------------



CATEGORY	A	B	C	D
LNAV MDA	1480-1 598 (600-1)		1480-1½ 598 (600-1½)	1480-1¾ 598 (600-1¾)
CIRCLING	1480-1 593 (600-1)		1480-1½ 593 (600-1½)	1520-2 633 (700-2)

REIL Rwy 13 and 31 0

MIRL Rwy 6-24 and 13-31 0

EC-3, 12 SEP 2019 to 10 OCT 2019

EC-3, 12 SEP 2019 to 10 OCT 2019