

WAAS CH 70716 W24A	APP CRS 240°	Rwy Idg TDZE Apt Elev	3897 884 887
--	------------------------	-----------------------------	---

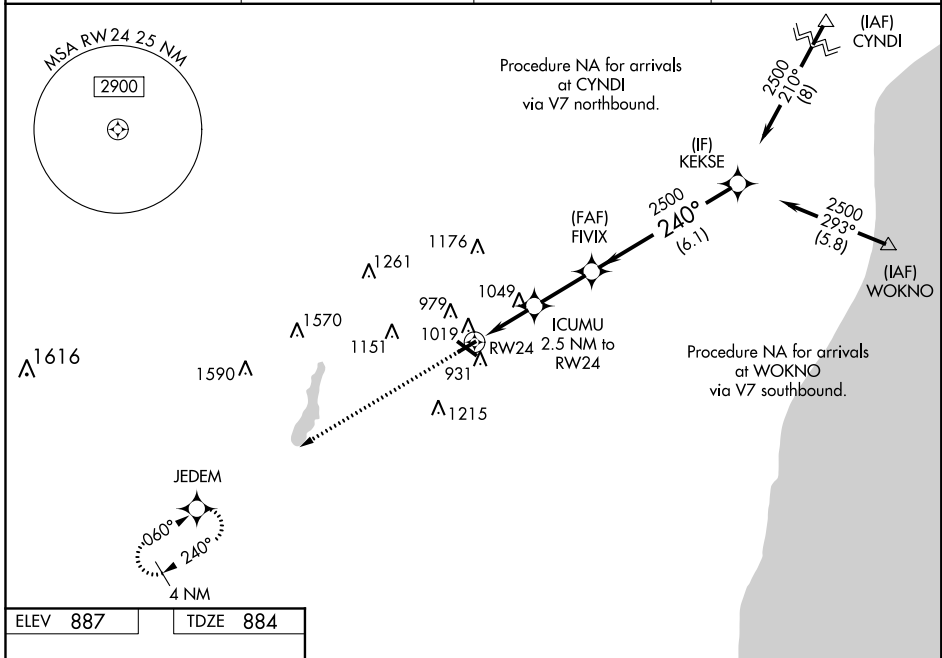
RNAV (GPS) RWY 24

WEST BEND MUNI (E/TB)

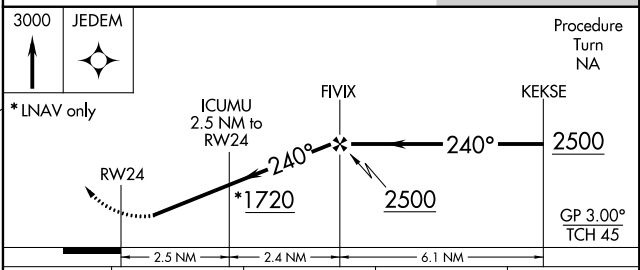
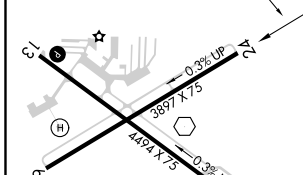
⚠ Baro-VNAV NA when using Milwaukee altimeter setting. For uncompensated Baro-VNAV systems, LNAV/VNAV NA below -16°C (4°F) or above 47°C (116°F). DME/DME RNP-0.3 NA.
⚠ Helicopter visibility reduction below 1 SM NA. When local altimeter setting not received, use Milwaukee altimeter setting and increase all DA 64 feet, all MDA 80 feet, increase LPV and LNAV/VNAV visibility 1/4 mile, LNAV Cat D visibility 1/4 mile, Circling Cat C/D visibility 1/4 mile. Night landing: Rwy 6, 24 NA.

MISSED APPROACH:
Climb to 3000 direct JEDEM and hold.

AWOS-3 120.0	MILWAUKEE APP CON 125.35 307.0	CLNC DEL 124.75	UNICOM 122.8 (CTAF) 0
------------------------	--	---------------------------	---------------------------------



ELEV 887	TDZE 884
----------	----------



CATEGORY	A	B	C	D
LPV DA	1196-1 312 (400-1)			
LNAV/VNAV DA	1369-1 3/4 485 (500-1 3/4)			
LNAV MDA	1300-1	416 (500-1)	1300-1 1/4	416 (500-1 1/4)
CIRCLING	1420-1	533 (600-1)	1460-1 1/2 573 (600-1 1/2)	1520-2 633 (700-2)

EC-3, 12 SEP 2019 to 10 OCT 2019

EC-3, 12 SEP 2019 to 10 OCT 2019