

# RNAV (GPS) RWY 6

WEST BEND MUNI (E/TB)

APP CRS	Rwy Idg	<b>3897</b>
<b>060°</b>	TDZE	<b>887</b>
	Apt Elev	<b>887</b>

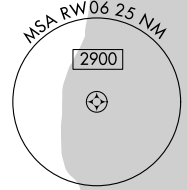
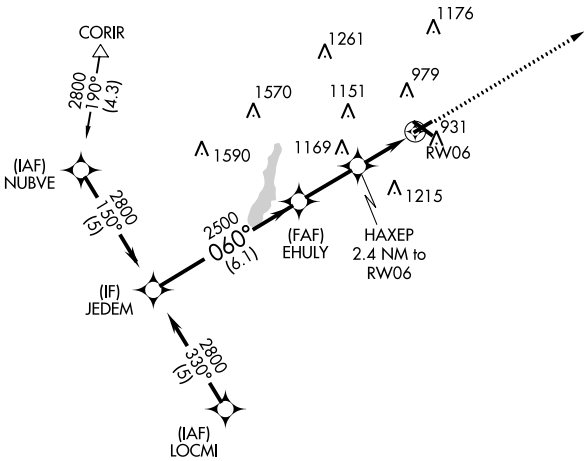
- ▼** DME/DME RNP-0.3 NA. When local altimeter setting not received, use Milwaukee/Lawrence J. Timmerman altimeter setting and increase all MDA 80 feet and LNAV and Circling Cat C/D visibility ¼ mile. Night landing: Rwy 6 NA. Helicopter visibility reduction below 1 SM NA.
- ▲** MISSED APPROACH: Climb to 3000 direct KEKSE and hold.

AWOS-3 <b>120.0</b>	MILWAUKEE APP CON <b>125.35 307.0</b>	CLNC DEL <b>124.75</b>	UNICOM <b>122.8 (CTAF) 0</b>
------------------------	--	---------------------------	---------------------------------

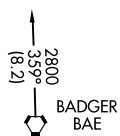
Procedure NA for arrivals at CORIR via V63-191 northbound.



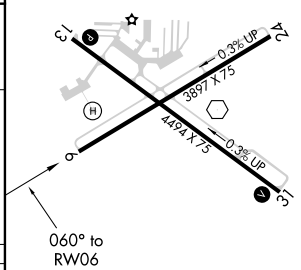
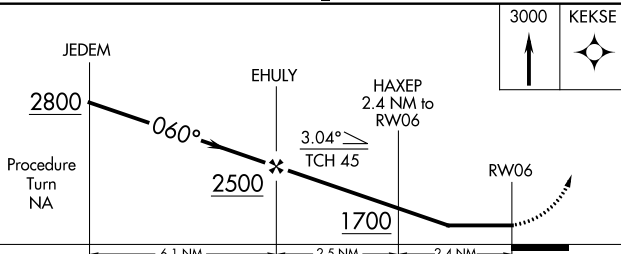
KEKSE



Procedure NA for arrivals on BAE VORTAC airway radials 302 CW 001.



ELEV 887	TDZE 887
----------	----------



CATEGORY	A	B	C	D
LNVA MDA	1420-1	533 (600-1)	1420-1½ 533 (600-1½)	1420-1¾ 533 (600-1¾)
CIRCLING	1420-1	533 (600-1)	1460-1½ 573 (600-1½)	1520-2 633 (700-2)

REIL Rwy 13 and 31  
MIRL Rwy 6-24 and 13-31

EC-3, 12 SEP 2019 to 10 OCT 2019

EC-3, 12 SEP 2019 to 10 OCT 2019