

VOR BJB 109.8	APP CRS 123°	Rwy Idg 4494
		TDZE 882
		Apt Elev 887

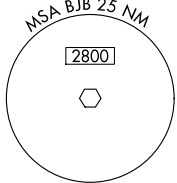
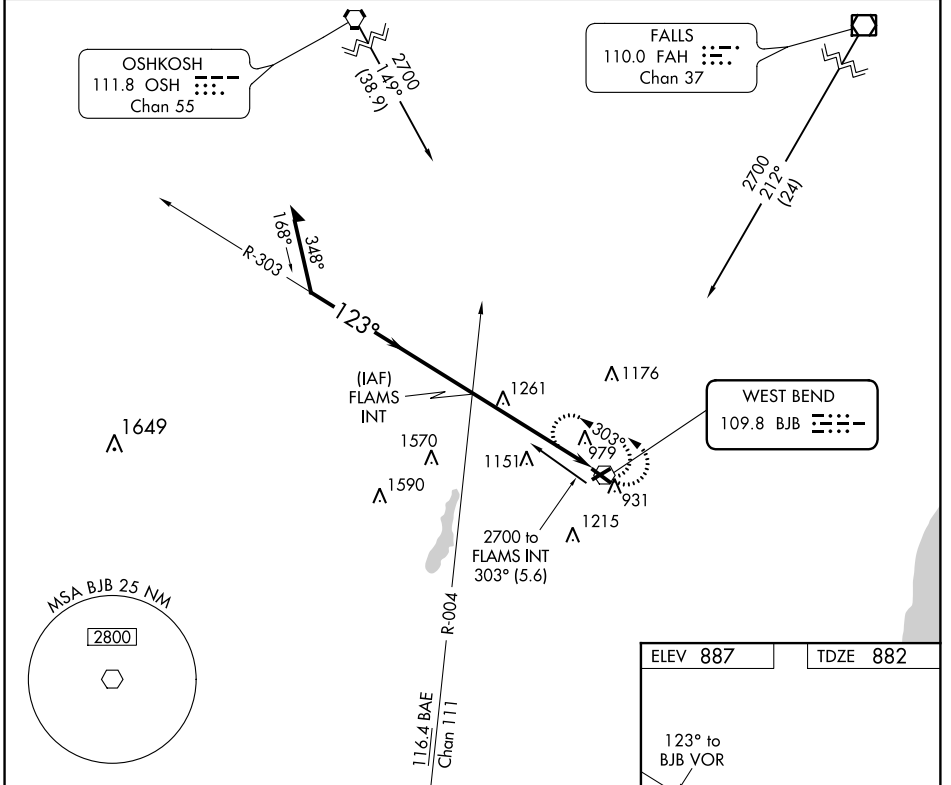
VOR RWY 13

WEST BEND MUNI (E/TB)

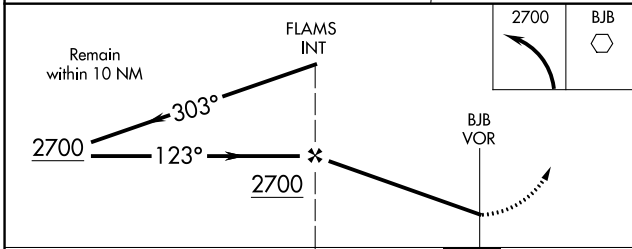
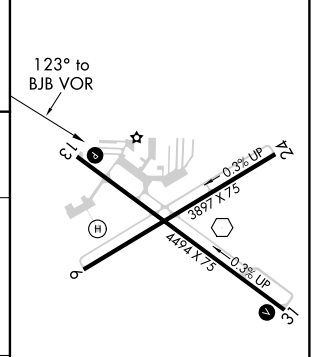
▼ Night landing: Rwy 6 NA. Helicopter visibility reduction below 3/4 SM NA. When local altimeter setting not received, use Milwaukee/Lawrence J. Timmerman altimeter setting and increase all MDA 80 feet and all Cat C/D visibility 1/4 mile.

MISSED APPROACH: Climbing left turn to 2700 in BJB VOR holding pattern.

AWOS-3 120.0	MILWAUKEE APP CON 125.35 307.0	CLNC DEL 124.75	UNICOM 122.8 (CTAF) 0
------------------------	--	---------------------------	---------------------------------



ELEV 887	TDZE 882
----------	----------



CATEGORY	A	B	C	D
S-13	1540-1	658 (700-1)	1540-1 3/4 658 (700-1 3/4)	1540-2 658 (700-2)
CIRCLING	1540-1	653 (700-1)	1540-1 3/4 653 (700-1 3/4)	1540-2 653 (700-2)

REIL Rwy 13 and 31 0
MIRL Rwy 6-24 and 13-31 0

EC-3, 12 SEP 2019 to 10 OCT 2019

EC-3, 12 SEP 2019 to 10 OCT 2019