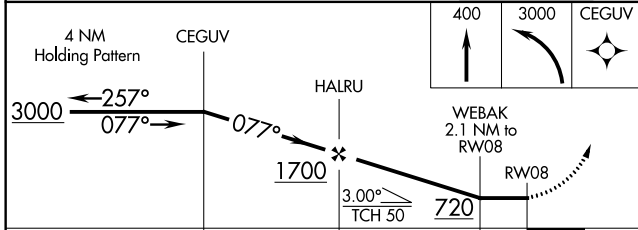
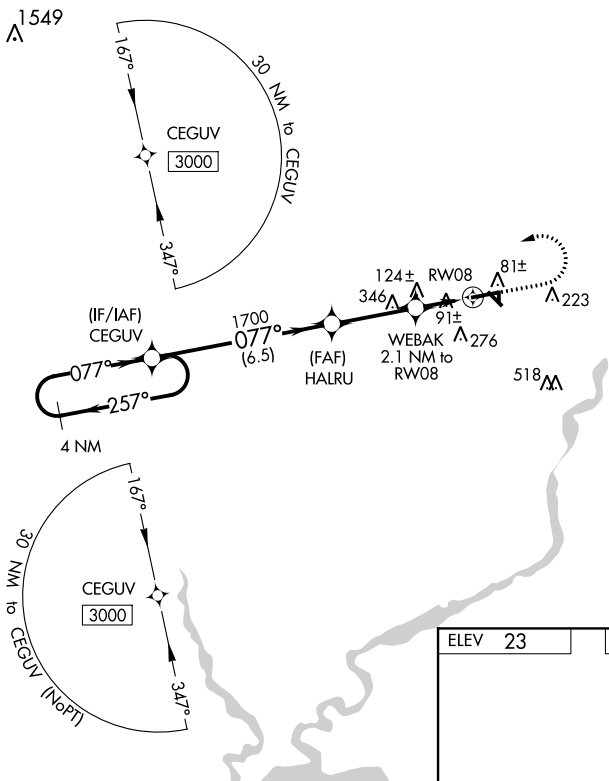


WAAS CH 90436 W08A	APP CRS 077°	Rwy Idg 5002 TDZE 17 Apt Elev 23
--	------------------------	---

RNAV (GPS) RWY 8

JENNINGS (3R7)

▼ ▲	DME/DME RNP-0.3 NA. Night landing; Rwy 08, 31 NA. Helicopter visibility reduction below 1 SM NA. When local altimeter setting not received, use Lake Charles Rgnl altimeter setting: Increase all MDA 80 ft, LP Cat C visibility 1/4 mile, LNAV Cat C visibility 3/8 mile, and Circling Cat C visibility 1/4 mile.	MISSED APPROACH: Climb to 400 then climbing left turn to 3000 direct CEGUV and hold.
AWOS-3PT 121.150	LAKE CHARLES APP CON * 119.8 282.3	GCO 135.075
		UNICOM 122.8 (CTAF) 0



ELEV 23	TDZE 17
---------	---------

The diagram shows RWY 08 with dimensions of 5002 x 75 feet. It also shows the dimensions for the taxiway and runway intersections: 3601 x 75 feet and 1977 x 150 feet. The diagram includes various markings such as runway numbers (8, 13, 26, 31), centerline, and edge lights. The diagram also shows the location of RWY 08 relative to other runways and the airport.

CATEGORY	A	B	C	D
LP MDA		360-1 343 (400-1)		NA
LNAV MDA		380-1 363 (400-1)		NA
CIRCLING	580-1 557 (600-1)		680-1 657 (700-1 3/4)	NA

SC-4, 12 SEP 2019 to 10 OCT 2019

SC-4, 12 SEP 2019 to 10 OCT 2019