

WAAS CH <b>40320</b> <b>W24A</b>	APP CRS <b>238°</b>	Rwy Idg TDZE Apt Elev	<b>5399</b> <b>9</b> <b>9</b>
--	------------------------	-----------------------------	-------------------------------------

# RNAV (GPS) RWY 24

HARRY P WILLIAMS MEMORIAL (PTN)

RNP APCH.

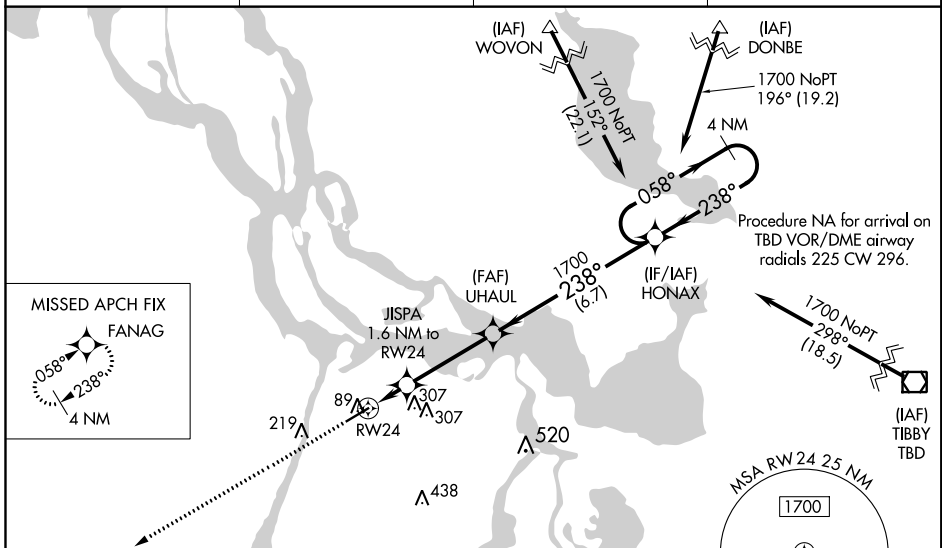
**⚠** For uncompensated Baro-VNAV systems, LNAV/VNAV NA below -15°C or above 54°C. Circling NA to Rwy 4W and 22W. Baro-VNAV and VDP NA when using New Iberia altimeter setting. When local altimeter setting not received, use New Iberia altimeter setting and increase all DA 82 feet and all MDA 100 feet; increase LNAV/VNAV all Cats visibility 1/8 mile, LNAV Cat C visibility 1/4 mile and Circling Cat C visibility 1/2 mile. For inop MALSR, increase LNAV Cat C visibility to 1 mile. For inop MALSR, when using New Iberia altimeter setting, increase LPV all Cats visibility to 7/8 mile, LNAV/VNAV all Cats visibility to 1 1/8 mile, and LNAV Cat C visibility to 1 1/8 mile. When VGSI inop, Circling Rwy 6 NA at night.

MALSR

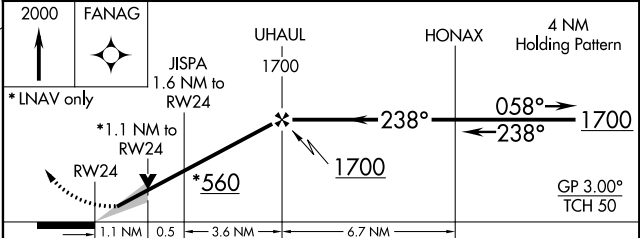
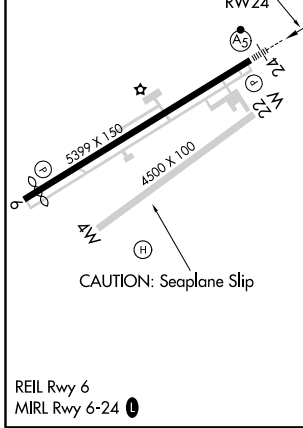


MISSED APPROACH:  
Climb to 2000 direct  
FANAG and hold.

AWOS-3PT <b>134.575</b>	NEW ORLEANS APP CON <b>124.3 350.35</b>	CLNC DEL <b>124.3</b>	UNICOM <b>122.8 (CTAF)</b> <b>Ⓛ</b>
----------------------------	--	--------------------------	--



ELEV <b>9</b>	TDZE <b>9</b>
---------------	---------------



CATEGORY	A	B	C	D
LPV DA		209-1/2	200 (200-1/2)	NA
LNAV/VNAV DA		259-1/2	250 (300-1/2)	NA
LNAV MDA	400-1/2	391 (400-1/2)	400-5/8 391 (400-5/8)	NA
CIRCLING	520-1 511 (600-1)	580-1 571 (600-1)	660-1 3/4 651 (700-1 3/4)	NA