

APP CRS <b>058°</b>	Rwy Idg TDZE Apt Elev	<b>5005</b> <b>9</b> <b>9</b>
------------------------	-----------------------------	-------------------------------------

# RNAV (GPS) RWY 6

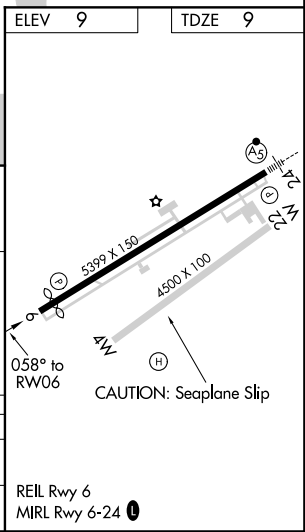
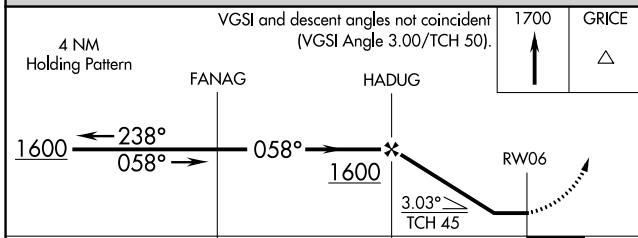
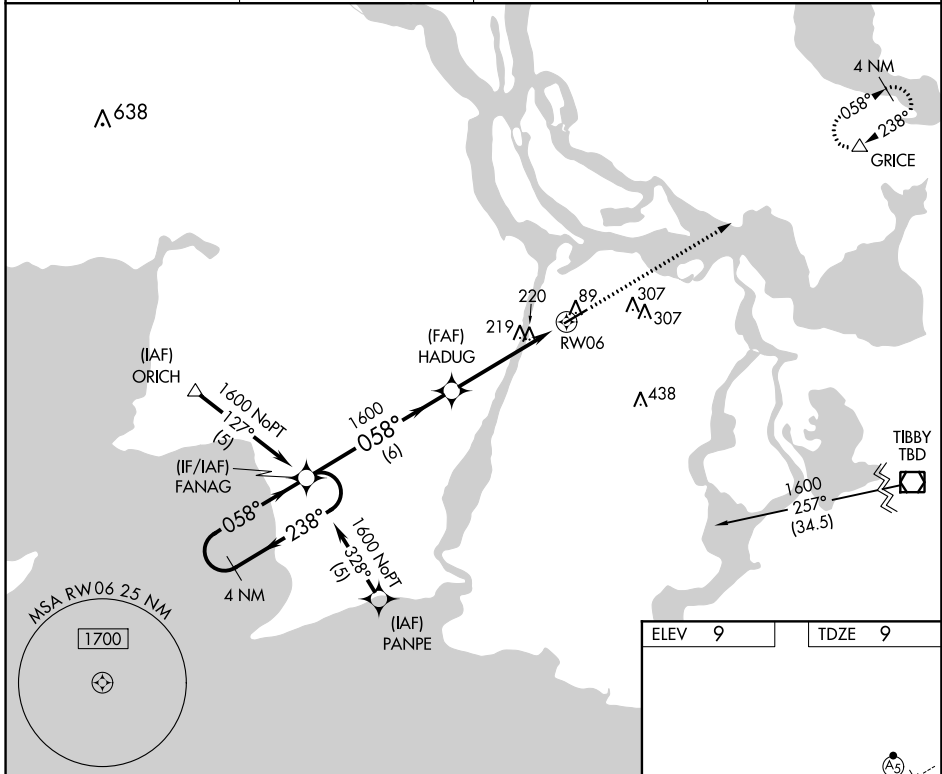
HARRY P WILLIAMS MEMORIAL (PTN)

RNP APCH.

**▽** Circling NA to Rwy 4W and 22W. Rwy 6 helicopter visibility reduction below 1 SM NA.  
**▲** When local altimeter setting not received, use New Iberia altimeter setting and increase all MDA 100 feet; increase LNAV Cat C visibility ¼ mile and Circling Cat C visibility ½ mile. When VGSI inop, Straight-in/Circling Rwy 6 procedure NA at night.

MISSED APPROACH: Climb to 1700 direct GRICE and hold.

AWOS-3PT <b>134.575</b>	NEW ORLEANS APP CON <b>124.3 350.35</b>	CLNC DEL <b>124.3</b>	UNICOM <b>122.8 (CTAF) 0</b>
----------------------------	--	--------------------------	---------------------------------



CATEGORY	A	B	C	D
LNAV MDA	540-1	531 (600-1)	540-1½ 531 (600-1½)	NA
CIRCLING	540-1 531 (600-1)	580-1 571 (600-1)	660-1¾ 651 (700-1¾)	NA

SC-4, 12 SEP 2019 to 10 OCT 2019

SC-4, 12 SEP 2019 to 10 OCT 2019