

VORTAC LFT <b>109.8</b> Chan 35	APP CRS <b>343°</b>	Rwy Idg TDZE Apt Elev	<b>5210</b> <b>74</b> <b>75</b>
---------------------------------------	------------------------	-----------------------------	---------------------------------------

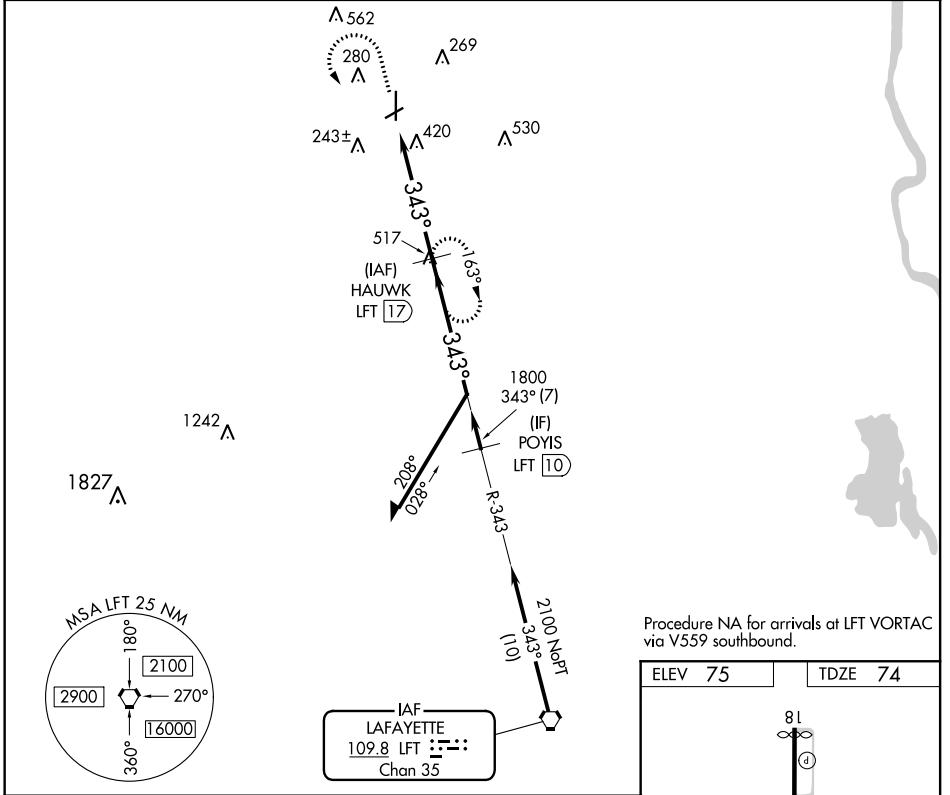
# VOR/DME RWY 36

ST LANDRY PARISH-AHART FIELD (OPL)

**▼** If local altimeter setting not received, use Lafayette Rgnl altimeter setting and increase all MDAs 60 feet. Rwy 36 helicopter visibility reduction below 3/4 SM NA. Circling Rwy 6, 24 NA at night.

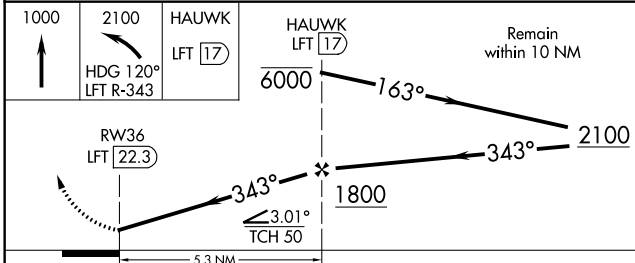
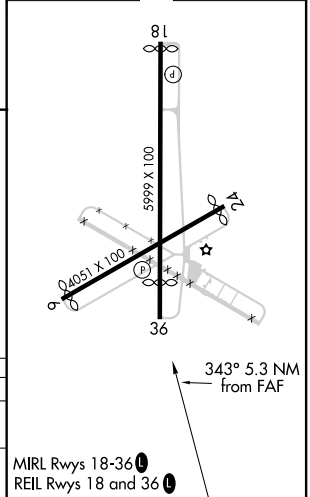
**▲NA** MISSED APPROACH: Climb to 1000 then climbing left turn to 2100 via heading 120° and LFT R-343 to HAUWK 17 DME and hold.

AWOS-3PT <b>118.775</b>	LAFAYETTE APP CON★ <b>128.7 268.7</b>	GCO <b>135.075</b>	UNICOM <b>123.0 (CTAF) 0</b>
----------------------------	--	-----------------------	---------------------------------



Procedure NA for arrivals at LFT VORTAC via V559 southbound.

ELEV 75	TDZE 74
---------	---------



CATEGORY	A	B	C	D
S-36	720-1 646 (700-1)	720-1¼ 646 (700-1¼)	720-1¾ 646 (700-1¾)	720-2 646 (700-2)
CIRCLING	780-1 705 (800-1)	780-1¼ 705 (800-1¼)	780-2 705 (800-2)	780-2¼ 705 (800-2¼)

MIRL Rwy 18-36  
REIL Rwy 18 and 36

SC-4, 12 SEP 2019 to 10 OCT 2019

SC-4, 12 SEP 2019 to 10 OCT 2019