

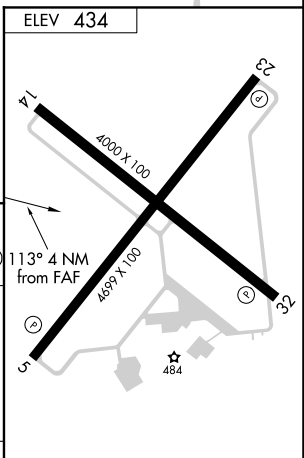
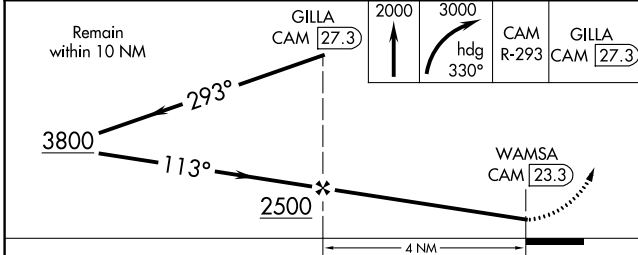
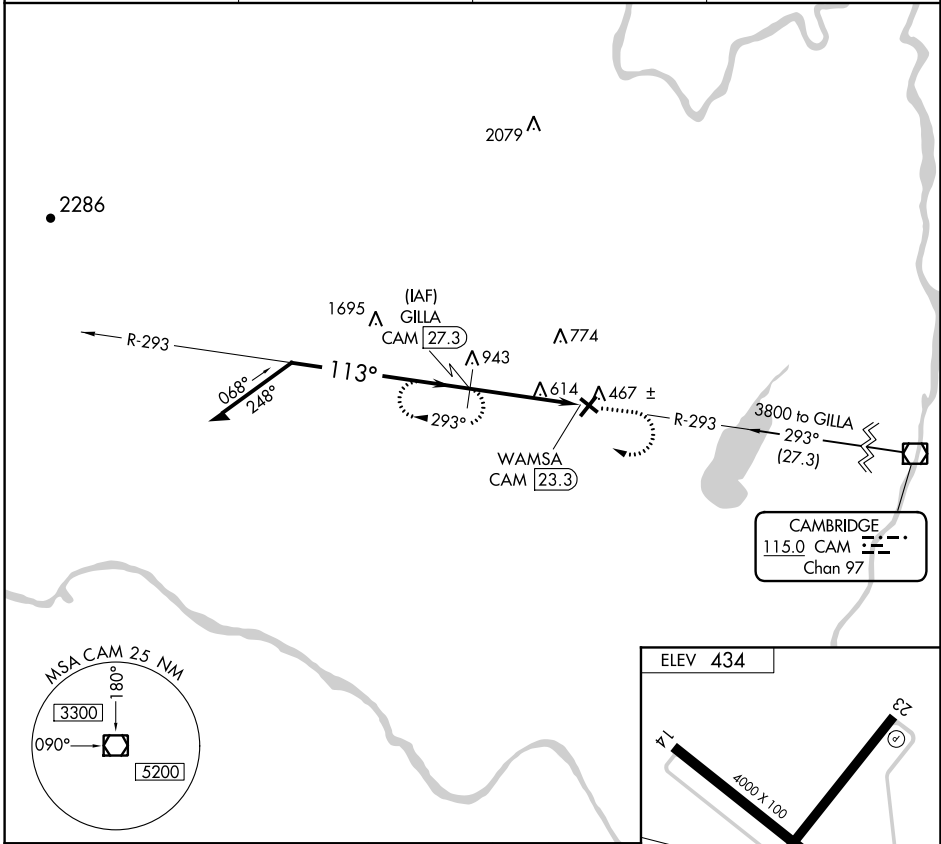
VOR/DME CAM 115.0 Chan 97	APP CRS 113°	Rwy Idg TDZE Apt Elev	N/A N/A 434
---	------------------------	-----------------------------	--

VOR/DME-A
SARATOGA COUNTY (5B2)

NA When local altimeter setting not received use Albany altimeter setting and increase all MDA 80 feet, and Cat A, C and D visibility ¼ mile.
Night landing: 5, 14, 32 NA. Helicopter visibility reduction below 1 SM NA.

MISSED APPROACH: Climb to 2000 then climbing right turn to 3000 via heading 330° and CAM VOR/DME R-293 to GILLA/CAM 27.3 DME and hold.

AWOS-3 132.025	ALBANY APP CON 118.05 263.075	CLNC DEL (GCO) 118.125	UNICOM 123.075(CTAF) 0
--------------------------	---	----------------------------------	----------------------------------



CATEGORY	A	B	C	D
CIRCLING	1260-1 826 (900-1)	1260-1¼ 826 (900-1¼)	1260-2½ 826 (900-2½)	1260-2¾ 826 (900-2¾)

MIRL Rwy 5-23 and 14-32 0
REIL Rwy 5, 23 and 32 0

NE-2, 12 SEP 2019 to 10 OCT 2019

NE-2, 12 SEP 2019 to 10 OCT 2019