

LOC I-HSA	APP CRS	Rwy Idg	8497
110.35	182°	TDZE	23
		Apt Elev	23

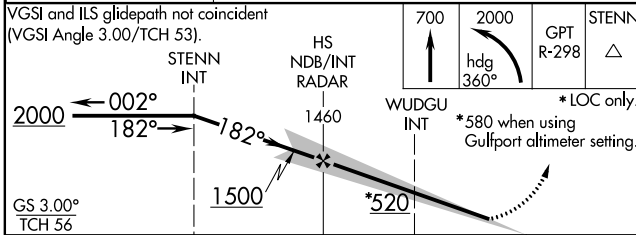
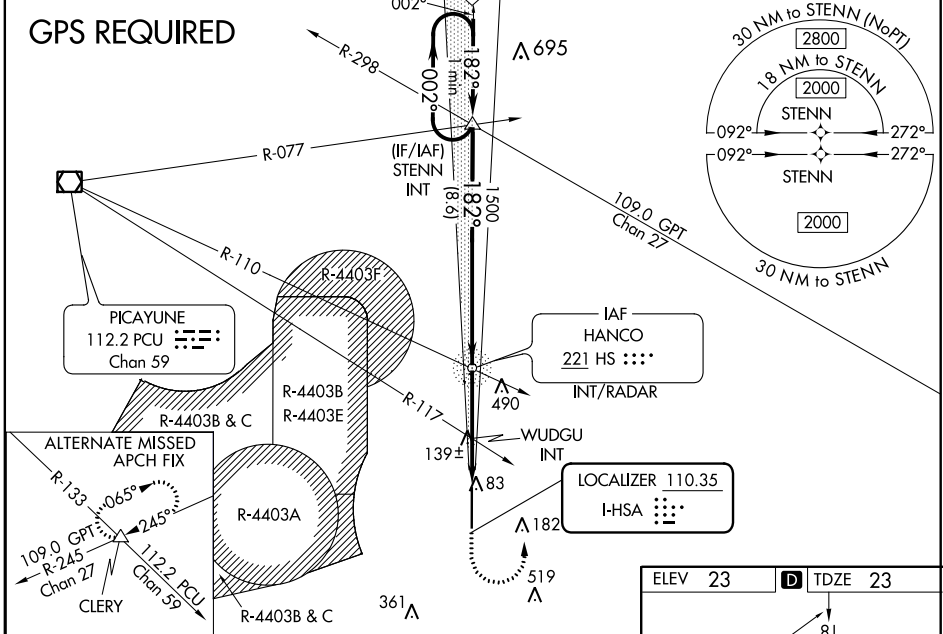
ILS Y or LOC Y RWY 18

STENNIS INTL (HSA)

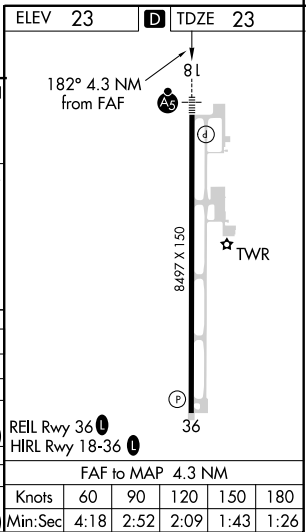
⚠ Circling NA for Cat E west of Rwy 18-36. When local altimeter setting not received, use Gulfport altimeter setting: increase DA to 270 feet; increase all MDA 60 feet and S-LOC 18 Cats C/D/E visibility 1/8 mile, Circling Cat C visibility 1/8 mile and Cats D/E visibility 1/4 mile. WUDGU fix minimums: increase S-LOC 18 Cats C/D/E visibility 1/8 mile, and Circling Cats D/E visibility 1/4 mile. For inop MALSRR, increase S-ILS 18 Cat E visibility to 1/4 mile, and S-LOC 18 Cats C/D/E visibility to 1 3/8 mile. WUDGU fix minimums: increase S-LOC 18 Cats C/D/E visibility to 1 mile. For inop MALSRR when using Gulfport altimeter setting, increase S-ILS 18 Cat E visibility to 1/4 mile and S-LOC 18 Cat E visibility to 1 3/8 mile. WUDGU fix minimums: increase S-LOC 18 Cat E visibility to 1 1/4 mile.

MISSED APPROACH: Climb to 700 then climbing left turn to 2000 on heading 360° and on GPT VORTAC R-298 to STENN and hold.

AWOS-3PT	GULFPORT APP CON*	STENNIS TOWER*	GND CON	UNICOM
118.375	124.6 354.1	127.15 (CTAF)	121.725	122.95



CATEGORY	A	B	C	D	E
S-ILS 18	223-1/2 200 (200-1/2)				
S-LOC 18	520-1/2	497 (500-1/2)	520-1 497 (500-1)		
C CIRCLING	520-1	497 (500-1)	520-1 1/2	820-2 1/2	820-2 3/4
WUDGU FIX MINIMUMS (DUAL VOR RECEIVERS REQUIRED)					
S-LOC 18	400-1/2	377 (400-1/2)	400-5/8 377 (400-5/8)		
C CIRCLING	480-1	457 (500-1)	520-1 1/2	820-2 1/2	820-2 3/4
			497 (500-1 1/2)	797 (800-2 1/2)	797 (800-2 3/4)



SC-4, 12 SEP 2019 to 10 OCT 2019

SC-4, 12 SEP 2019 to 10 OCT 2019