

NDB HS	APP CRS	Rwy Idg	8497
221	181°	TDZE	23
		Apt Elev	23

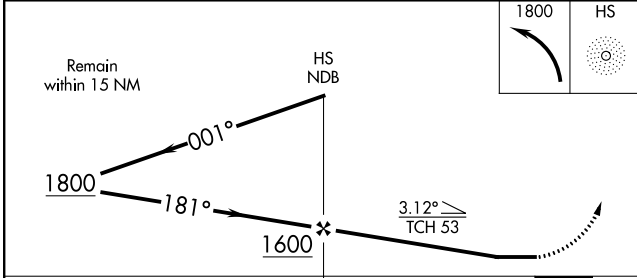
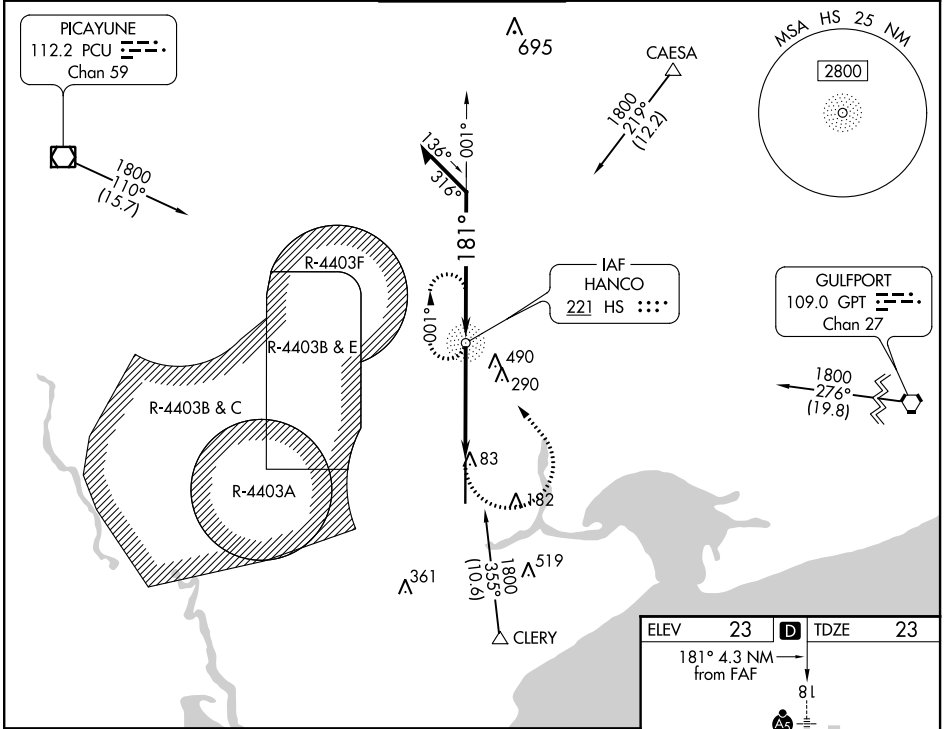
NDB RWY 18

STENNIS INTL (HSA)

Procedure NA when R4403B and R4403E are active. Circling NA for Cat E west of Rwy 18-36. When local altimeter setting not received use Gulfport altimeter setting and increase all MDAs 60 feet and increase S-18 Cat C/D/E and Circling Cat C visibility 1/8 SM and Circling Cat D/E visibility 1/4 SM. For inop ALS, increase S-18 Cat A/B visibility to 1 SM, and Cat C/D/E visibility to 1 1/2 SM. For inop ALS when using Gulfport altimeter setting, increase Cat C/D/E visibility to 1 3/4 SM.

MALSRS
 MISSED APPROACH: Climbing left turn to 1800 direct HS NDB and hold.

AWOS-3PT 118.375	GULFPORT APP CON★ 124.6 354.1	STENNIS TOWER★ 127.15 (CTAF)	GND CON 121.725	UNICOM 122.95
----------------------------	---	--	---------------------------	-------------------------



ELEV 23		TDZE 23			
181° 4.3 NM from FAF					
REIL Rwy 36		36			
HIRL Rwy 18-36		36			
FAF to MAP 4.3 NM					
Knots	60	90	120	150	180
Min:Sec	4:18	2:52	2:09	1:43	1:26

CATEGORY	A	B	C	D	E
S-18	600-3/4	577 (600-3/4)	600-1 1/4	577 (600-1 1/4)	
CIRCLING	600-1	577 (600-1)	600-1 5/8	820-2 1/2	820-2 3/4
			577 (600-1 5/8)	797 (800-2 1/2)	797 (800-2 3/4)

SC-4, 12 SEP 2019 to 10 OCT 2019

SC-4, 12 SEP 2019 to 10 OCT 2019