

WAAS CH 58224 W18A	APP CRS 182°	Rwy Idg TDZE 23 Apt Elev 23	8497
--	------------------------	---	-------------

RNAV (GPS) RWY 18

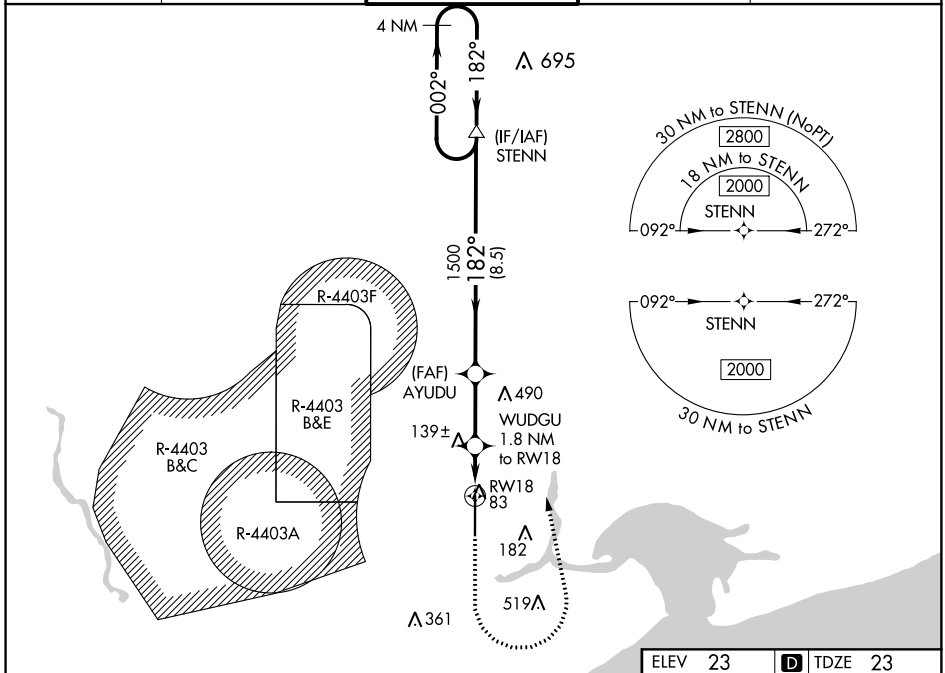
STENNIS INTL (HSA)

⚠ For uncompensated Baro-VNAV systems, LNAV/VNAV NA below -1.5°C (5°F) or above 54°C (130°F). Circling NA for Cat E west of Rwy 18-36. Baro-VNAV and VDP NA when using Gulfport altimeter setting. DME/DME RNP-0.3 NA. When local altimeter setting not received, use Gulfport altimeter setting: increase LPV DA to 247 feet; increase LNAV/VNAV DA to 373 feet; increase all MDA 60 feet and LNAV Cats C/D/E visibility 1/8 mile, and Circling Cats D/E visibility 1/4 mile. For inop MALSRL, increase LNAV Cats C/D/E visibility to 1 mile. For inop MALSRL when using Gulfport altimeter setting, increase LNAV Cat E visibility to 1 1/4 mile.



MISSED APPROACH:
Climb to 1400, then climbing left turn to 2000 direct STENN and hold.

AWOS-3PT 118.375	GULFPORT APP CON* 124.6 354.1	STENNIS TOWER* 127.15 (CTAF)	GND CON 121.725	UNICOM 122.95
----------------------------	---	--	---------------------------	-------------------------



SC-4, 12 SEP 2019 to 10 OCT 2019

SC-4, 12 SEP 2019 to 10 OCT 2019

ELEV 23		TDZE 23	
4 NM Holding Pattern		VGSI and RNAV glidepath not coincident (VGSI Angle 3.00/TCH 53).	
2000 ← 002° → 182°		1400 2000 STENNIS	
GP 3.00° TCH 56		* LNAV only.	
1500		AYUDU 1500	
182°		WUDGU 1.8 NM to RWY 18	
182°		1 NM to RWY 18*	
182°		RWY 18	
8.5 NM		2.7 NM	
0.8 NM		1 NM	
* 640		* 640	
CATEGORY	A	C	E
LPV DA	223-1/2	200 (200-1/2)	
LNAV/VNAV DA	326-1/2	303 (400-1/2)	
LNAV MDA	400-1/2 377 (400-1/2)	400-5/8 377 (400-5/8)	
CIRCLING	480-1 457 (500-1)	520-1 1/2 497 (500-1 1/2)	820-2 1/2 797 (800-2 1/2) 820-2 3/4 797 (800-2 3/4)
REIL Rwy 36		HIRL Rwy 18-36	

