

VENICE, FLORIDA

AL-5960 (FAA)

19059

WAAS CH 53433 W23A	APP CRS 230°	Rwy Idg TDZE Apt Elev	4377 18 18
--	------------------------	-----------------------------	---------------------------------------

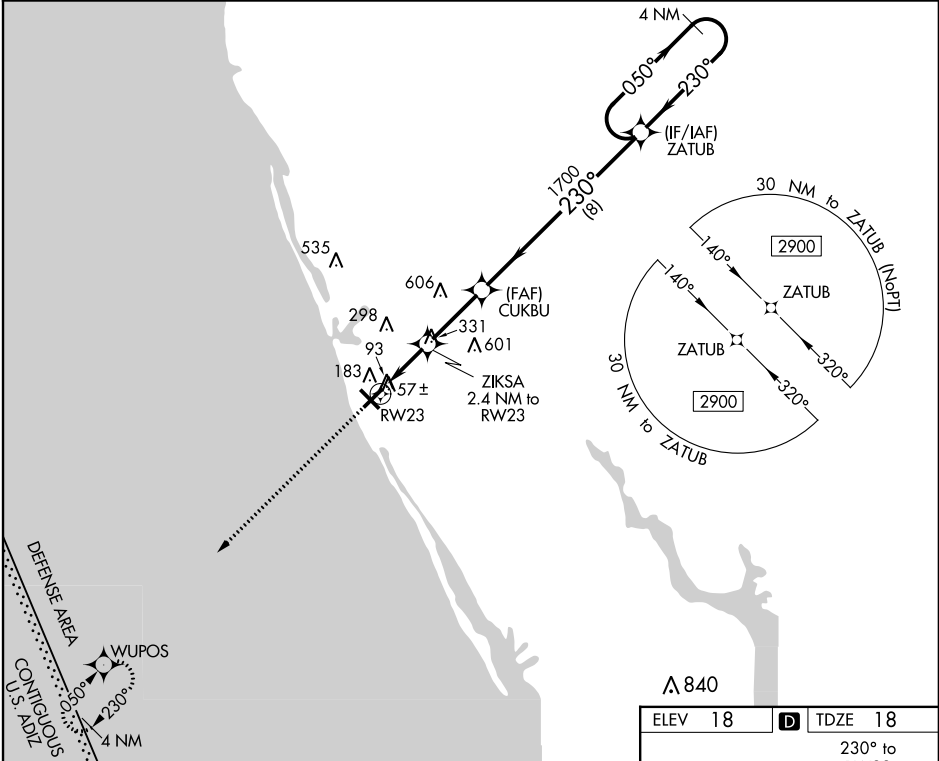
RNAV (GPS) RWY 23

VENICE MUNI (VNC)

⚠ When local altimeter setting not received, use Sarasota altimeter setting and increase all MDA 60 feet and increase LP and LNAV Cats C, D visibility $\frac{1}{8}$ mile, and Circling Cat C visibility $\frac{1}{4}$ mile. DME/DME RNP-0.3 NA. VDP NA with Sarasota altimeter setting. Helicopter visibility reduction below $\frac{1}{4}$ SM NA.

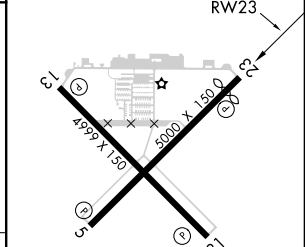
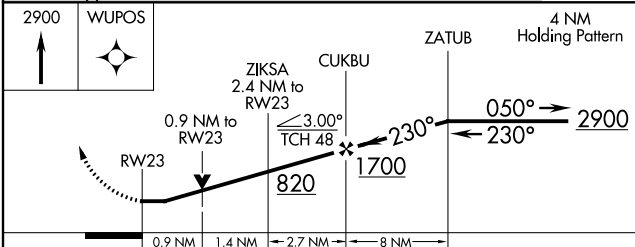
MISSED APPROACH:
Climb to 2900 direct WUPOS and hold.

AWOS-3 119.275	TAMPA APP CON 119.65 353.575	CLNC DEL 118.075	UNICOM 122.725 (CTAF) 0
--------------------------	--	----------------------------	-----------------------------------



SE-3, 12 SEP 2019 to 10 OCT 2019

SE-3, 12 SEP 2019 to 10 OCT 2019



CATEGORY	A	B	C	D
LP MDA	360-1		342 (400-1)	
LNAV MDA	440-1	422 (500-1)	440-1 $\frac{1}{4}$	422 (500-1 $\frac{1}{4}$)
C CIRCLING	500-1	482 (500-1)	700-2 682 (700-2)	920-3 902 (1000-3)

MIRL Rwy 5-23 and 13-31 **0**
REIL Rwy 5-23, and 13-31 **0**

VENICE, FLORIDA
Orig-B 16OCT14

27°04'N-82°26'W

RNAV (GPS) RWY 23

VENICE MUNI (VNC)