

WAAS CH <b>78223</b> <b>W31A</b>	APP CRS <b>320°</b>	Rwy Idg <b>4999</b> TDZE <b>16</b> Apt Elev <b>18</b>
--	------------------------	---

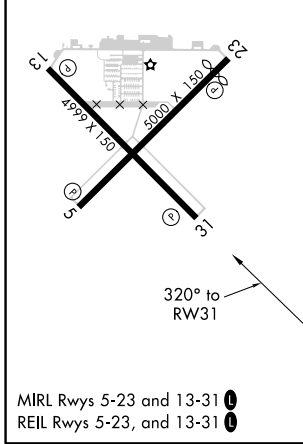
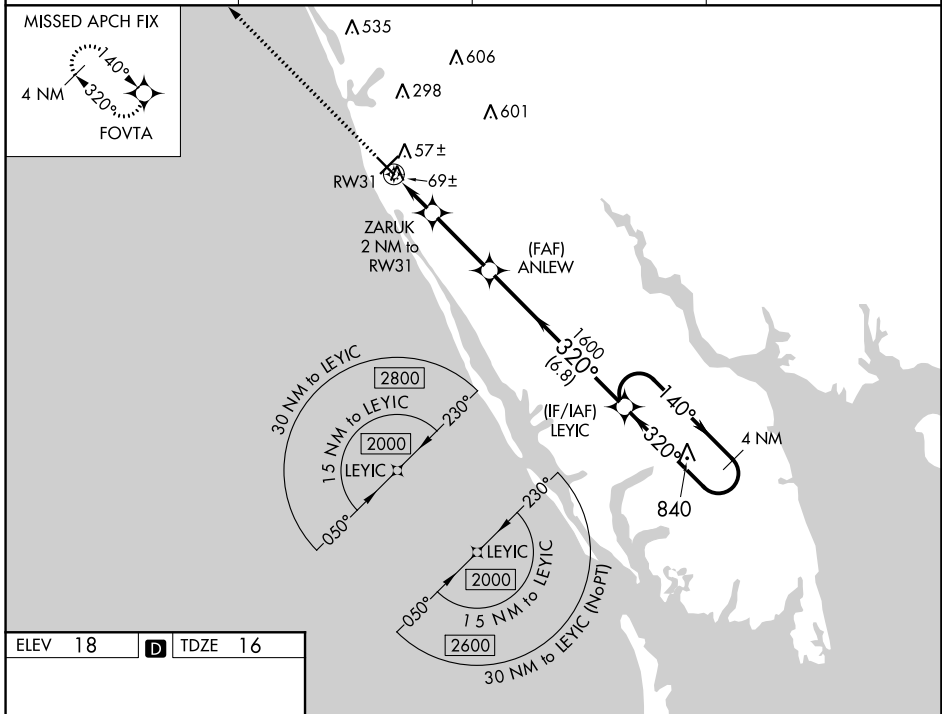
# RNAV (GPS) RWY 31

VENICE MUNI (VNC)

**⚠** Inop table does not apply. DME/DME RNP-0.3 NA. Helicopter visibility reduction below 3/4 SM NA. When local altimeter setting not received, use Sarasota altimeter setting and increase all MDA 60 feet LP/LNAV Cat C and D visibility 1/8 mile and Circling Cat C visibility 1/4 mile.

**MISSED APPROACH:** Climb to 2000 direct FOVTA and hold.

AWOS-3 <b>119.275</b>	TAMPA APP CON <b>119.65 353.575</b>	CLNC DEL <b>118.075</b>	UNICOM <b>122.725 (CTAF) ①</b>
--------------------------	--	----------------------------	-----------------------------------



CATEGORY	A	B	C	D
LP MDA	360-1 344 (400-1)			
LNAV MDA	360-1 344 (400-1)			
<b>C</b> CIRCLING	500-1	482 (500-1)	700-2 682 (700-2)	920-3 902 (1000-3)