

WAAS CH <b>50425</b> <b>W18A</b>	APP CRS <b>175°</b>	Rwy Idg TDZE Apt Elev	<b>4500</b> <b>1213</b> <b>1219</b>
--	------------------------	-----------------------------	---

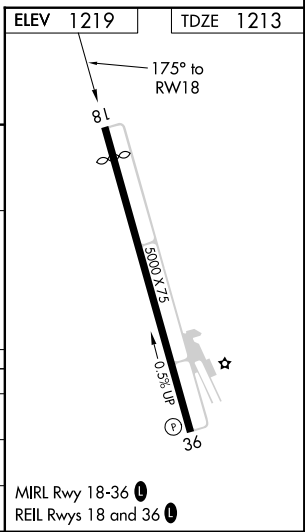
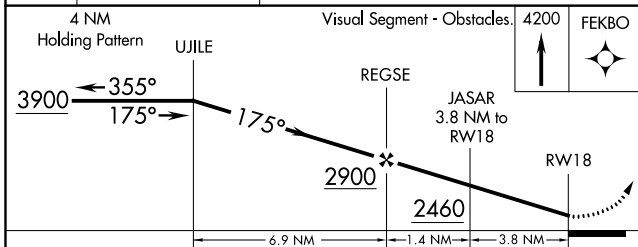
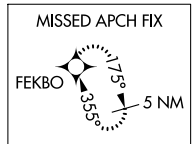
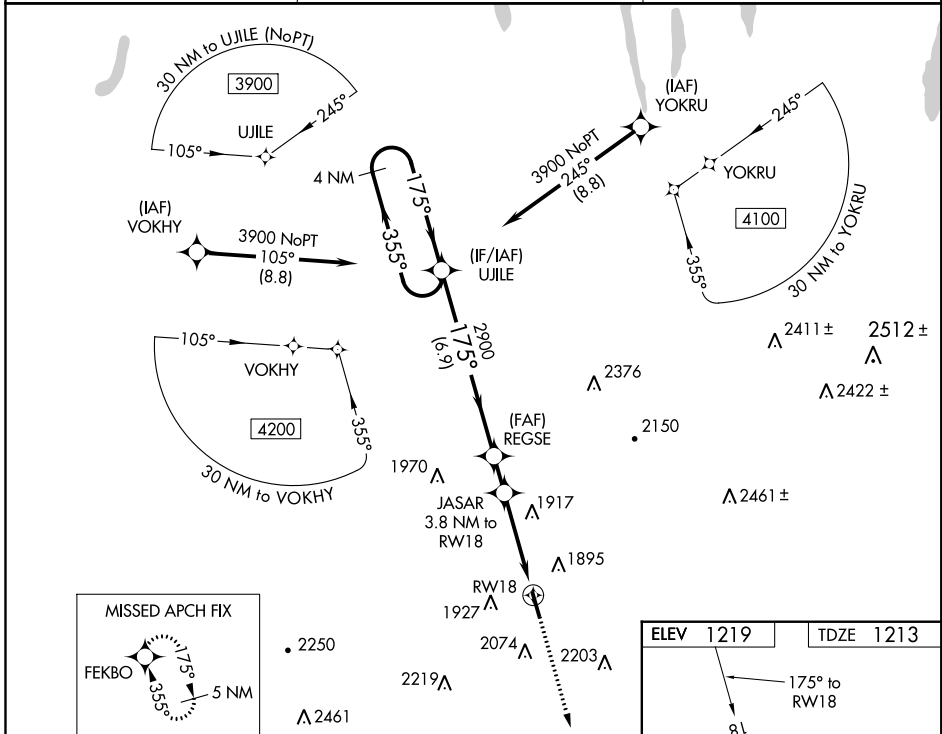
# RNAV (GPS) RWY 18

HORNELL MUNI (HTF)

**▼** DME/DME RNP-0.3 NA. When local altimeter setting not received, use Dansville altimeter setting and increase all MDA 120 feet.  
**▲** NA Night landing: Rwy 18 NA. Helicopter visibility reduction below 1 SM NA.

MISSED APPROACH: Climb to 4200 direct FEKBO and hold.

AWOS-3 <b>118.475</b>	CLEVELAND CENTER <b>124.325 353.85</b>	UNICOM <b>122.7 (CTAF) 0</b>
--------------------------	---	---------------------------------



CATEGORY	A	B	C	D
LP MDA	2200-1¼ 987 (1000-1¼)	2200-1½ 987 (1000-1½)	2200-3 987 (1000-3)	NA
LNAV MDA	2240-1¼ 1027 (1100-1¼)	2240-1½ 1027 (1100-1½)	2240-3 1027 (1100-3)	NA
CIRCLING	2360-1¼ 1140 (1200-1¼)	2360-1½ 1140 (1200-1½)	2440-3 1220 (1300-3)	NA

MIRL Rwy 18-36 0  
REIL Rwy 18 and 36 0

NE-2, 12 SEP 2019 to 10 OCT 2019

NE-2, 12 SEP 2019 to 10 OCT 2019