

19003

CAMP PENDLETON MCAS (MUNN FIELD) (KNFG)

BEACH EIGHT DEPARTURE (OBSTACLE) (BEACH8•OCN)

OCEANSIDE, CALIFORNIA

ATIS ★ 285.45
 CLNC DEL
 134.675 271.6
 GND CON
 134.675 360.2
 CAMP PENDLETON TOWER ★
 128.775 340.2
 SOCAL DEP CON
 127.3 323.0

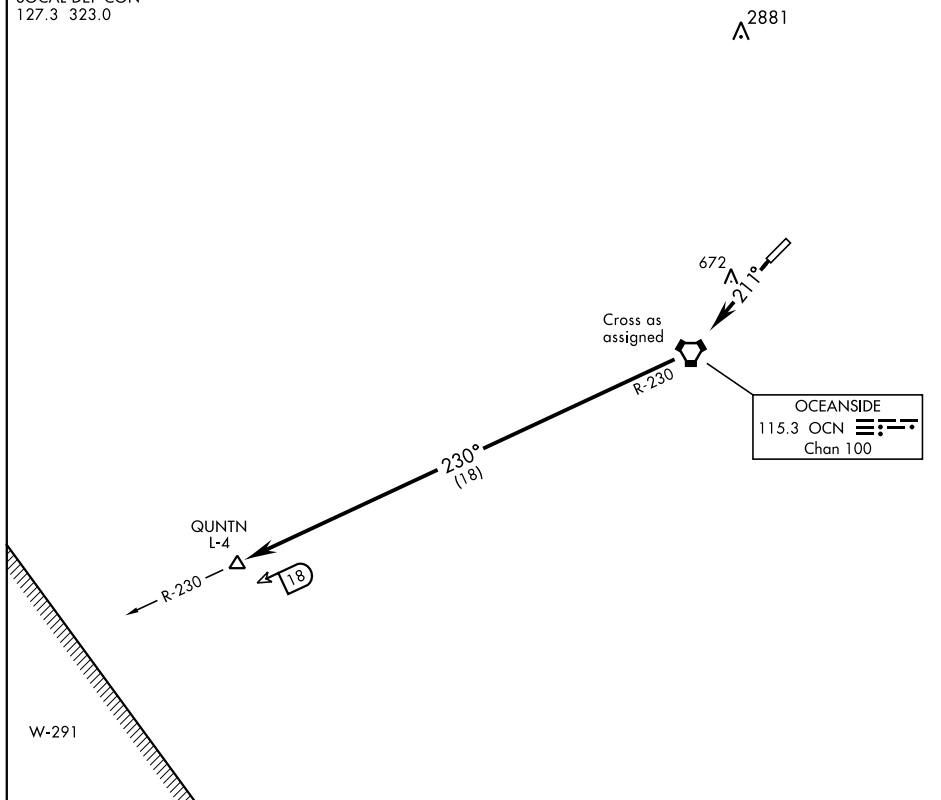
SL-5985 [USN]

Rwy	Knots	60	120	180	240	300	360
21	V/V(fpm)	482	964	1446	1928	2410	2892

Minimum Climb Rate to 900

SW-3, 12 SEP 2019 to 10 OCT 2019

SW-3, 12 SEP 2019 to 10 OCT 2019



DEPARTURE ROUTE DESCRIPTION

TAKE-OFF RWY 21: Climb on heading 211° to 900. Cross OCN VORTAC at assigned altitude, then direct QUNTN.

BEACH EIGHT DEPARTURE (OBSTACLE) (BEACH8•OCN)

OCEANSIDE, CALIFORNIA

CAMP PENDLETON MCAS (MUNN FIELD) (KNFG)