

BULLDOG ONE DEPARTURE (OBSTACLE) (BLDG 1 • VISTA) CAMP PENDLETON MCAS (MUNN FIELD) (KNFG) OCEANSIDE, CALIFORNIA

ATIS ★ 285.45
 CLNC DEL
 134.675 271.6
 GND CON
 134.675 360.2
 CAMP PENDLETON TOWER ★
 128.775 340.2
 SOCAL DEP CON
 127.3 323.0

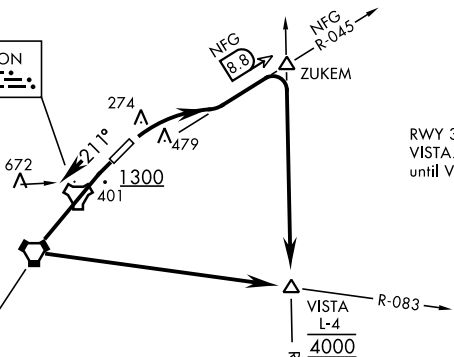
SL-5985 [USN]

Rwy	Knots	60	120	180	240	300	360
3 (A)	V/V(fpm)	479	958	1437	1916	2395	2874
21 (B)	V/V(fpm)	482	964	1446	1928	2410	2892

Minimum Climb Rate

- Ⓐ to 800
- Ⓑ to 1300

CAMP PENDLETON
 Chan 55 NFG



RWY 3: RNAV required ZUKEM to VISTA. Do not exceed 240 KIAS until VISTA.

OCEANSIDE
 115.3 OCN
 Chan 100

MISSION BAY
 117.8 MZB
 Chan 125

NOT FOR CIVIL USE

DEPARTURE ROUTE DESCRIPTION

TAKE-OFF RWY 3: Climbing right turn to intercept NFG TACAN R-045 to ZUKEM then right turn direct VISTA. Cross VISTA at 4000 or assigned altitude.

TAKE-OFF RWY 21: Climb on heading 211° to 1300 then climb direct OCN VORTAC, then left turn to intercept OCN R-083 direct VISTA. Cross VISTA at 4000 or assigned altitude.

SW-3, 12 SEP 2019 to 10 OCT 2019

SW-3, 12 SEP 2019 to 10 OCT 2019