

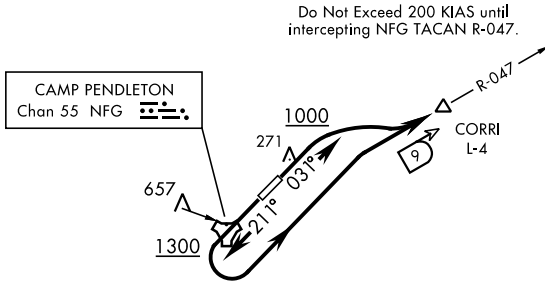
CORRI TWO DEPARTURE (OBSTACLE) (CORRI2•CORRI)

ATIS ★ 285.45
 CLNC DEL
 134.675 271.6
 GND CON
 134.675 360.2
 CAMP PENDLETON TOWER ★
 128.775 340.2
 SOCAL DEP CON
 127.3 323.0

SL-5985 [USN]

Rwy	Knots	60	120	180	240	300	360
3	V/V(fpm)	358	716	1074	1432	1790	2148
21	V/V(fpm)	446	892	1338	1784	2230	2676

Minimum Climb Rate to 1000



RADAR REQUIRED
NOT FOR CIVIL USE
NOT FOR USE BY CAT D/E AIRCRAFT

DEPARTURE ROUTE DESCRIPTION

TAKE-OFF RWY 3: Climb on heading 031° to 1000 then climbing right turn to 3800 and intercept NFG TACAN R-047 to CORRI.

TAKE-OFF RWY 21: Climb on heading 211° to 1300 then climbing left turn to 3800 and intercept NFG TACAN R-047 to CORRI.