

MUNN TWO DEPARTURE (OBSTACLE) (MUNN 2•ROBNN)

CAMP PENDLETON MCAS (MUNN FIELD) (KNFG)

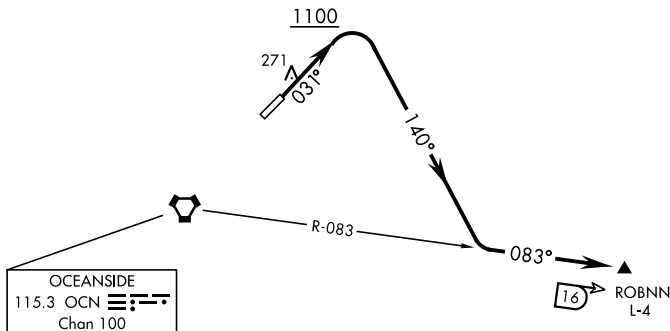
OCEANSIDE, CALIFORNIA

ATIS ★285.45
 CLNC DEL
 134.675 271.6
 GND CON
 134.675 360.2
 CAMP PENDLETON TOWER ★
 128.775 340.2
 SOCAL DEP CON
 127.3 323.0

SI-5985 [USN]

Rwy	Knots	60	120	180	240	300	360
3	V/V(fpm)	358	716	1074	1432	1790	2148

Minimum Climb Rate to 1000



SW-3, 12 SEP 2019 to 10 OCT 2019

SW-3, 12 SEP 2019 to 10 OCT 2019



DEPARTURE ROUTE DESCRIPTION

TAKE-OFF RWY 3: Climb on heading 031° to 1100 then climbing right turn heading 140° to intercept OCN VORTAC R-083 to ROBNN.
 Cross ROBNN at 5000 or as directed by ATC.