

OCEANSIDE, CALIFORNIA

RNAV (GPS) RWY 21

AL-5985 (USN)

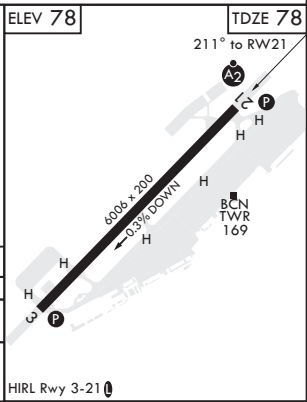
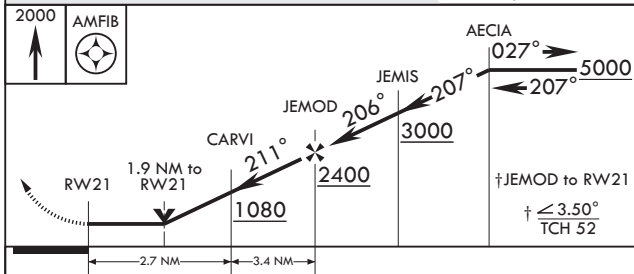
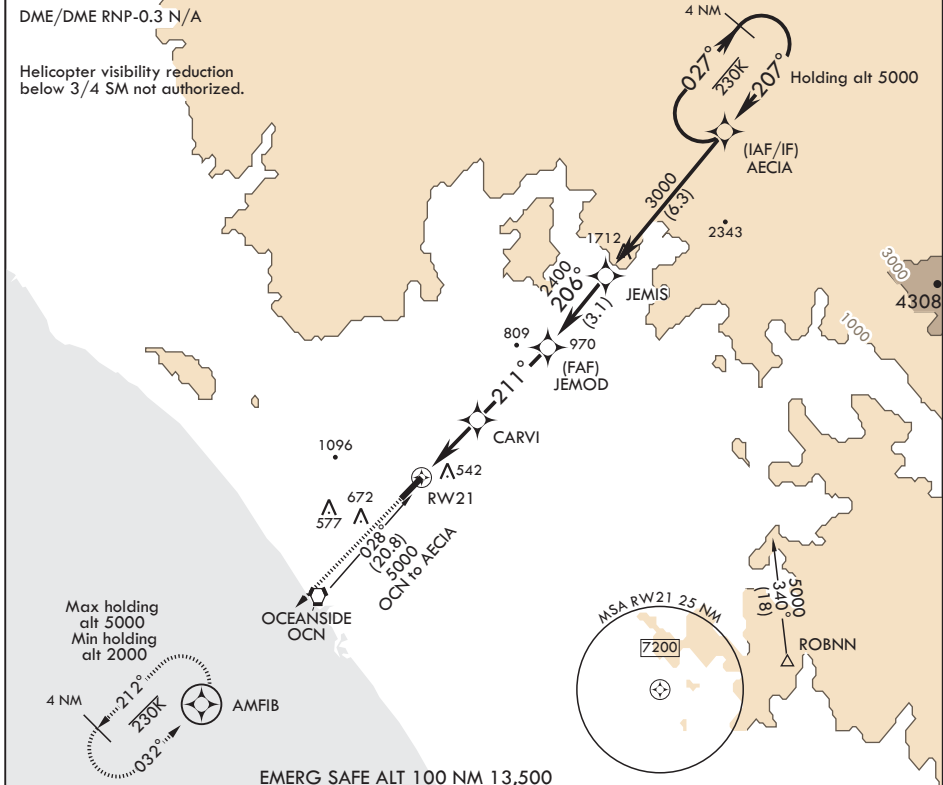
CAMP PENDLETON MCAS (MUNN FLD) (KNFG)

APCH CRS 211°	Rwy Idg 6006
TDZE 78	
Arprt Elev 78	

V * When ALS inop, increase CAT A vis to 1 mile, CAT B vis to 1 1/4 miles; CAT CD vis to 2 1/2 miles.
 ** Circling Rwy 3 not authorized at night when VGSi inop.

SALS
 MISSED APPROACH: Climb to 2000 direct AMFIB and hold.

ATIS ★ 285.45	SOCAL APP CON/DEP CON 127.3 323.0	TOWER ★ 128.775 340.2	GND CON 134.675 360.2	CLNC DEL 134.675 271.6	ASR/PAR
-------------------------	---	---------------------------------	---------------------------------	----------------------------------	---------



CATEGORY	A	B	C	D
LNAV MDA*	840-3/4 762 (800-3/4)	840-1 762 (800-1)	840-2	762 (800-2)
CIRCLING**	1000-1 1/4 922 (1000-1 1/4)	1180-1 1/2 1102 (1200-1 1/2)	1400-3	1322 (1400-3)

OCEANSIDE, CALIFORNIA

33°18'N - 117°21'W CAMP PENDLETON MCAS (MUNN FLD) (KNFG)

Amdt 3 03JAN19

RNAV (GPS) RWY 21

SW-3, 12 SEP 2019 to 10 OCT 2019

SW-3, 12 SEP 2019 to 10 OCT 2019