

# TACAN RWY 3

AL-5985 [USN] CAMP PENDLETON MCAS (MUNN FIELD) (KNFG)

VORTAC OCN <b>115.3</b> Chan <b>100</b>	APCH CRS <b>026°</b>	Rwy Idg TDZE Arprt Elev <b>6006</b> <b>67</b> <b>78</b>
-----------------------------------------------	-------------------------	------------------------------------------------------------------------

Procedure not authorized at night when VGSI inop

\* MISSED APPROACH: Climb to 4200 and intercept the OCN VORTAC R-026 direct CUPIS and hold.

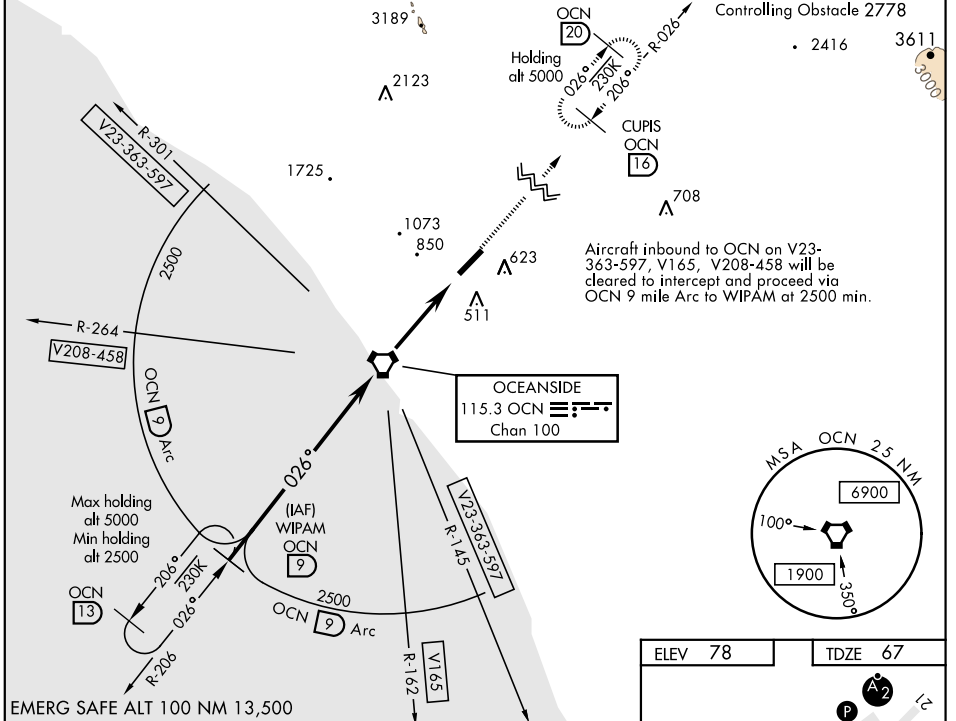
ATIS ★ <b>285.45</b>	SOCAL APP CON <b>127.3 323.0</b>	CAMP PENDLETON TOWER ★ <b>128.775 0 340.2</b>	GND CON <b>134.675 360.2</b>	CLNC DEL <b>134.675 271.6</b>	ASR/PAR
-------------------------	-------------------------------------	--------------------------------------------------	---------------------------------	----------------------------------	---------

CAUTION: High terrain on final approach.

\* CAUTION: Missed Approach  
Minimum Climb Rate to 3500

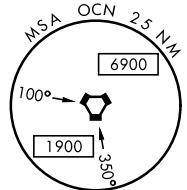
Knots	60	120	180	240	300
V/V(fpm)	275	550	825	1100	1375

Controlling Obstacle 2778

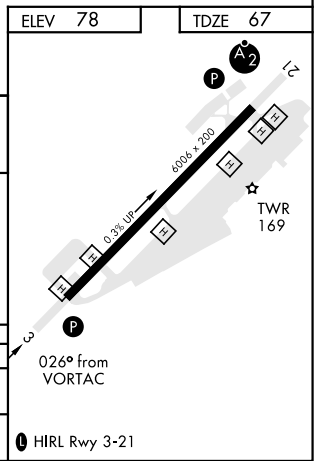
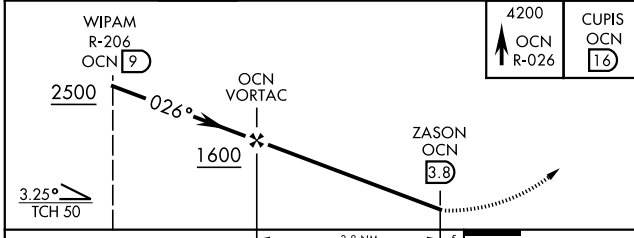


SW-3, 12 SEP 2019 to 10 OCT 2019

SW-3, 12 SEP 2019 to 10 OCT 2019



EMERG SAFE ALT 100 NM 13,500



	3.8 NM		.5	
CATEGORY	A	B	C	D
S-3	960-1¼ 893 (900-1¼)		960-2½ 893 (900-2½)	
CIRCLING	1000-1¼ 922 (1000-1¼)	1180-1½ 1102 (1200-1½)	1400-3	1322 (1400-3)

# TACAN RWY 3