

OCEANSIDE, CALIFORNIA

VOR/DME or TACAN Y RWY 21

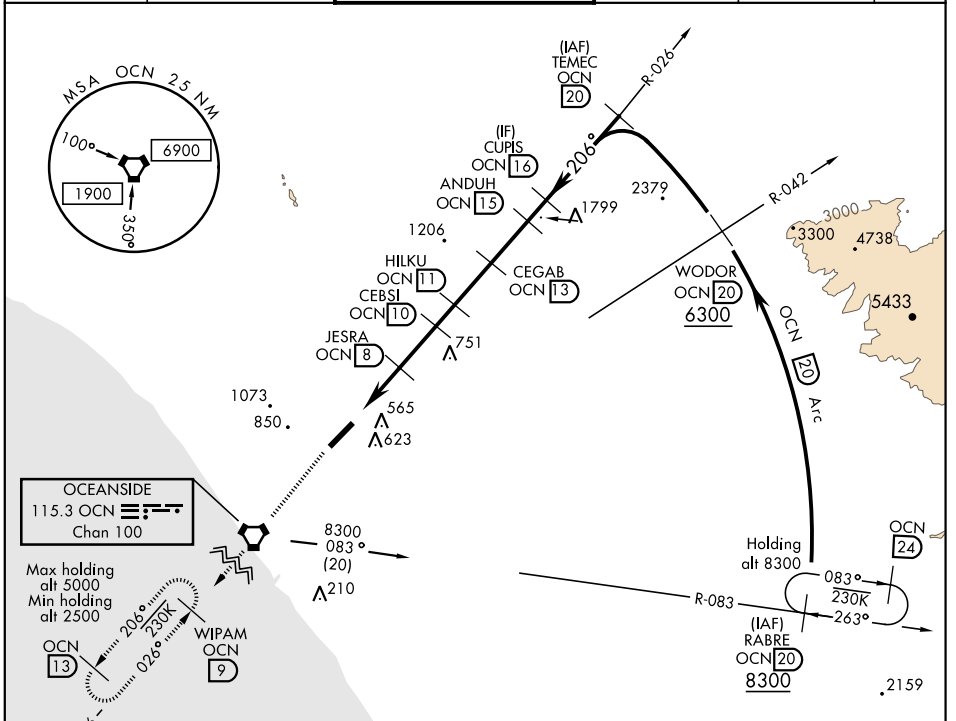
VORTAC OCN 115.3 Chan 100	APCH CRS 206°	Rwy ldg TDZE 78 Arpt Elev 78	6006
---	-------------------------	--	-------------

AL-5985 [USN] CAMP PENDLETON MCAS (MUNN FIELD) (KNFG)

▼ * When ALS inop, increase CAT A vis to 1 mile, CAT B vis to 1¼ mile.
** Circling Rwy 3 not authorized at night when VGSI inop.

SALSF
A2
MISSED APPROACH: Climb to 2500 direct OCN VORTAC then direct WIPAM and hold.

ATIS ★ 285.45	SOCAL APP CON 127.3 323.0	CAMP PENDLETON TOWER ★ 128.775 0 340.2	GND CON 134.675 360.2	CLNC DEL 134.675 271.6	ASR/PAR
-------------------------	-------------------------------------	--	---------------------------------	----------------------------------	---------



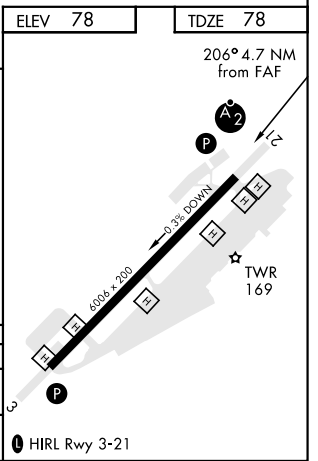
2500 OCN WIPAM OCN 9

VORTAC CEDVU 6 JESRA 8 CEBSI 10 HILKU 11 CEGAB 13 ANDUH 15 CUPIS 16 TEMEC 20 5000

1080 1800 2100 2700 3300 3600

† From CEBIS
↑ 3.35° TCH 52

CATEGORY	A	B	C	D
S-21*	940-¾ 862 (900-¾)	940-1 862 (900-1)	940-2½ 862 (900-2½)	
CIRCLING**	1000-1¼ 922 (1000-1¼)	1180-1½ 1102 (1200-1½)	1400-3 1322 (1400-3)	



OCEANSIDE, CALIFORNIA

33° 18'N-117° 21'W CAMP PENDLETON MCAS (MUNN FIELD) (KNFG)

Amtd 4 03JAN19

VOR/DME or TACAN Y RWY 21

SW-3, 12 SEP 2019 to 10 OCT 2019

SW-3, 12 SEP 2019 to 10 OCT 2019