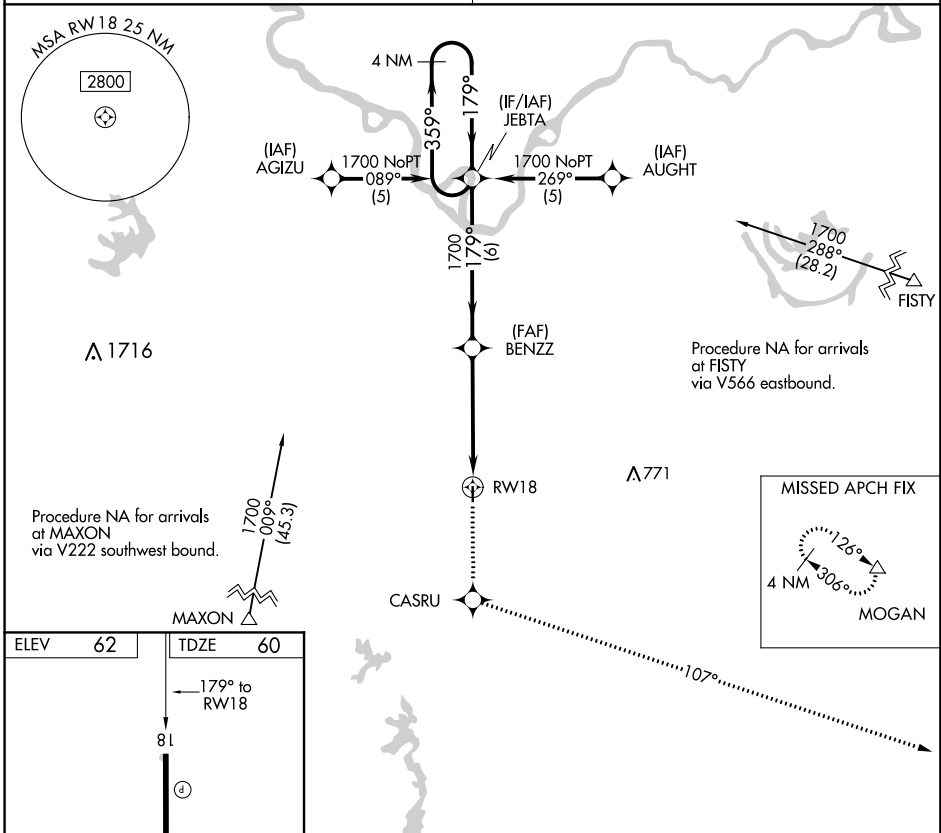


APP CRS	Rwy Idg	3005
179°	TDZE	60
	Apt Elev	62

RNAV (GPS) RWY 18

BUNKIE MUNI (2R6)

RNP APCH.	MISSED APPROACH: Climb to 2000 direct CASRU and via 107° track to MOGAN and hold.
<p>▼ Use Alexandria Intl altimeter setting; when not received, use Esler Rgnl altimeter setting.</p> <p>▲ NA</p>	
POLK APP CON 125.4 302.2	CTAF 122.9 0



ELEV 62	TDZE 60
<p>← 179° to RW18</p> <p>81</p> <p>3005 X 7.5</p> <p>36</p>	
<p>REIL Rwy 18 and 36 0</p> <p>MIRL Rwy 18-36 0</p>	

2000	CASRU	107° tr	MOGAN	VGSI and descent angles not coincident (VGSI Angle 3.00/TCH 25).
BENZZ		JEBTA		4 NM Holding Pattern
RW18		179°		359° → 1700
5 NM		6 NM		
CATEGORY	A	B	C	D
LNAV MDA	600-1 540 (600-1)		NA	

SC-4, 12 SEP 2019 to 10 OCT 2019

SC-4, 12 SEP 2019 to 10 OCT 2019