

APP CRS 359°	Rwy Idg 3005
	TDZE 60
	Apt Elev 62

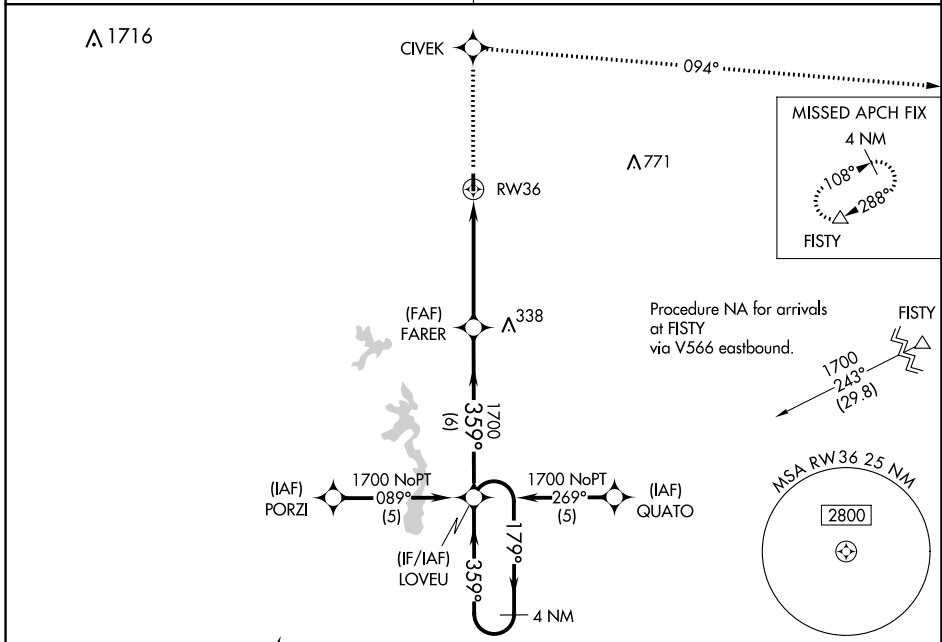
RNAV (GPS) RWY 36

BUNKIE MUNI (2R6)

⚠ DME/DME RNP-0.3 NA. Visibility reduction by helicopters NA. Use Alexandria Intl altimeter setting; when not received, use Esler Rgnl altimeter setting.

⚠ MISSED APPROACH: Climb to 4000 direct CIVEK and right turn via 094° track to FISTY and hold.

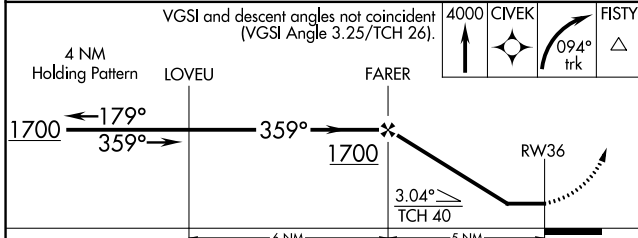
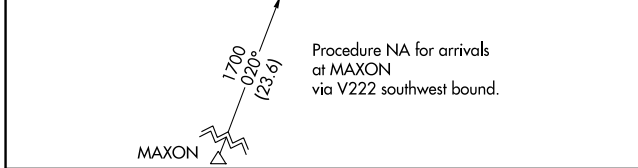
POLK APP CON 125.4 302.2	CTAF 122.9 0
------------------------------------	------------------------



ELEV 62	TDZE 60
----------------	----------------

REIL Rwy 18 and 36 **0**

MIRL Rwy 18-36 **0**



CATEGORY	A	B	C	D
LNVA MDA	580-1 520 (600-1)		NA	
CIRCLING	580-1 518 (600-1)		NA	

SC-4, 12 SEP 2019 to 10 OCT 2019

SC-4, 12 SEP 2019 to 10 OCT 2019