

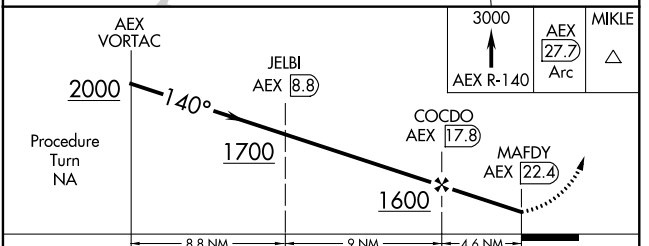
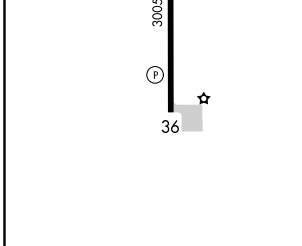
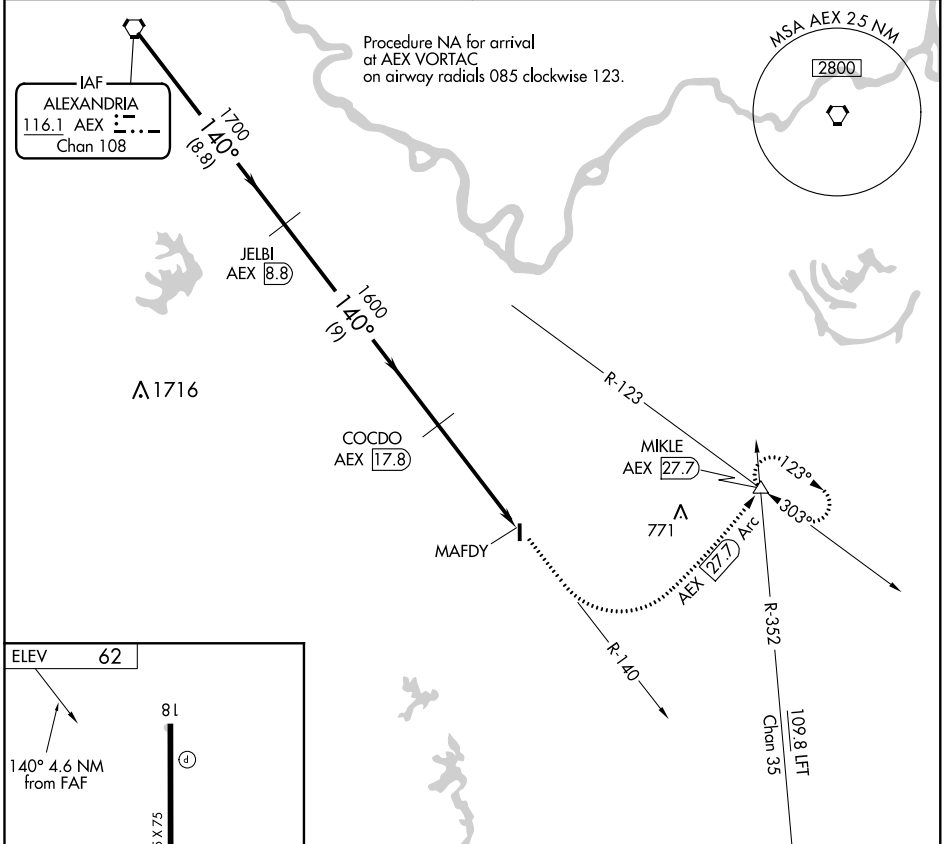
<b>VORTAC AEX</b> <b>116.1</b> Chan <b>108</b>	<b>APP CRS</b> <b>140°</b>	Rwy Idg TDZE Apt Elev	<b>N/A</b> <b>N/A</b> <b>62</b>
--	-------------------------------	-----------------------------	---------------------------------------

**VOR/DME-A**  
BUNKIE MUNI (2R6)

**NA** Use Alexandria Intl altimeter setting; when not received, use Esler Rgnl altimeter setting.

**MISSED APPROACH:** Climb to 3000 via AEX R-140 and AEX 27.7 DME Arc to MIKLE Int/AEX 27.7 DME and hold.

<b>POLK APP CON</b> <b>125.4 302.2</b>	<b>CTAF</b> <b>122.9</b>
---	-----------------------------



REIL Rwys 18 and 36	MIRL Rwy 18-36			
CATEGORY	A	B	C	D
CIRCLING	880-1 818 (900-1)	880-1¼ 818 (900-1¼)	NA	

SC-4, 12 SEP 2019 to 10 OCT 2019

SC-4, 12 SEP 2019 to 10 OCT 2019