


LOC/DME I-ECH 109.3 Chan 30	APP CRS 115°	Rwy Idg TDZE Apt Elev 7500 92 92
--	------------------------	--

ILS Y or LOC Y RWY 11

KETCHIKAN INTL (KTN)(PAKT)

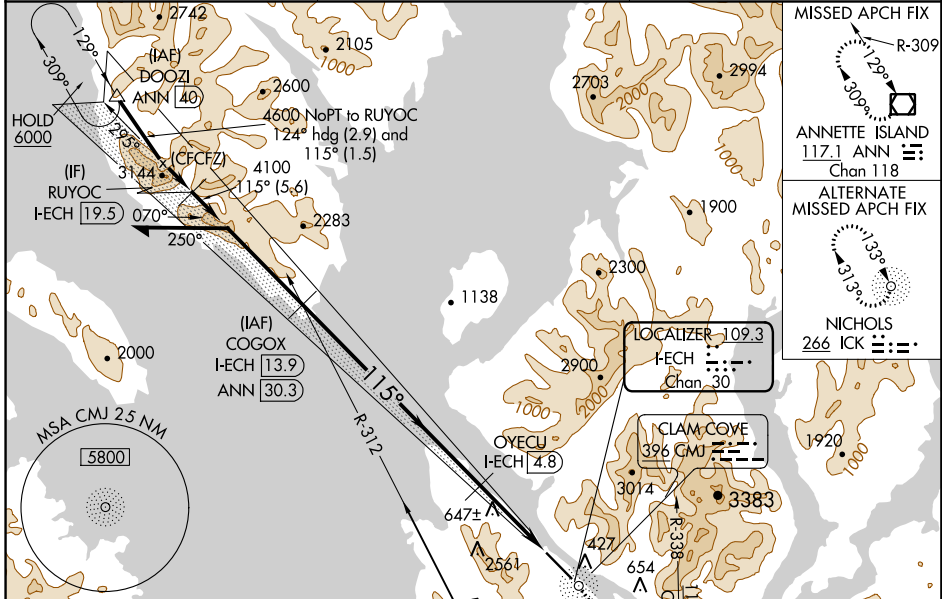
⚠ DME and ADF required. For inop MALS, increase \uparrow S-ILS 11 visibility to RVR 6000 and S-LOC 11 Cats C and D visibility to 2½. # RVR 1800 authorized with the use of FD or AP or HUD to DA.

MALS 

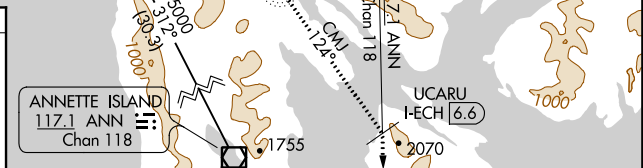
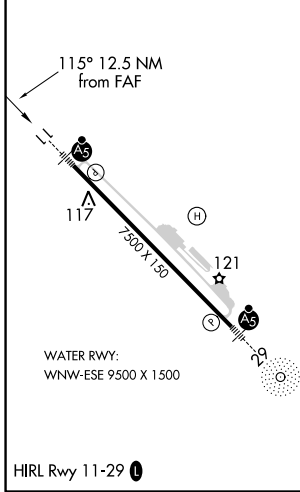
MISSED APPROACH: Climb to 5000 direct CMJ NDB and on CMJ NDB bearing 124° to UCARU/I-ECH 6.6 DME and on ANN VOR/DME R-338 to ANN VOR/DME and hold.

S-ILS 11 missed approach requires minimum climb of 305 feet per NM to 4000.
 \uparrow S-ILS 11 missed approach requires minimum climb of 270 feet per NM to 4000.
 S-LOC 11 missed approach requires minimum climb of 235 feet per NM to 4000.
 If unable to meet climb gradients, see LOC X RWY 11.

AFIS 134.45	ANCHORAGE CENTER 118.5 284.6	KETCHIKAN RADIO 123.6 (CTAF)
-----------------------	--	--



ELEV 92	TDZE 92
---------	---------



Use I-ECH DME when on the localizer course.	COGOX I-ECH 13.9	5000 CMJ	CMJ 124°	UCARU I-ECH 6.6	ANN R-338	ANN
Remain within 10 NM						
4600	4100	4100	OYECU I-ECH 4.8			*LOC only
GS 3.00° TCH 50						

CATEGORY	A	B	C	D
# S-ILS 11		292/24	200 (200-½)	
\uparrow S-ILS 11		481/45	389 (400-¾)	
S-LOC 11	880/24 788 (800-½)	880/40 788 (800-¾)	880-1¾	788 (800-1¾)

AK, 15 AUG 2019 to 10 OCT 2019

AK, 15 AUG 2019 to 10 OCT 2019